

AIRLINK™ RAVEN X WIRELESS DATA COMMUNICATIONS PLATFORM FOR EV-DO REVISION A NETWORKS

KEY FEATURES

■ Markets

Financial
Wireless Networking
Utilities
Infrastructure

■ Product Features

Embedded Intelligence
High-Speed Processor
Machine Protocols
Class I Div 2 Certified

■ Product Benefits

Persistent Network Connectivity
High-Speed 2-Way Data
Certified for Hazardous Environments
Remote Management and Configuration
Simple Integration with Legacy Equipment

TECHNICAL SPECIFICATIONS

■ Technology

CDMA EV-DO Revision A
With Fallback to:
CDMA 1x EV-DO Release 0
CDMA 1xRTT
CDMA IS-95

■ Bands

800 Mhz Cellular
1900 Mhz PCS

■ Environmental

Operating Temperature:
-30 to 70° Celsius
Storage Temperature:
-40 to 85° Celsius

■ Power Consumption (@12V DC)

Transmit/Receive (Typical/Max) 239/270 mA
Idle 104 mA
Dormant 85 mA
Input Voltage 9 - 28V DC

■ Standards/Approvals

FCC
Industry Canada
Class I Div 2
Carrier specific approvals

■ Host Interfaces

Ethernet: 10/100 Mbps RJ-45
RS-232: DB9 DCE(1200 – 230400 baud)
Antenna Connection:
Primary - 50 Ohm SMA
Receive Diversity - 50 Ohm SMA

■ Dimensions

116mm x 35mm x 63mm
317 grams

■ Application Interfaces

TCP/IP, UDP/IP, DHCP, HTTP, SNMP,
SMTP, SMS, MSCI, Modbus and more

■ LED Indicators

Network
Signal
Activity
Service
Power

■ For More Information

North America and Asia

Tel: +1 510 624 4200

Fax: +1 510 624 4299

Europe

Tel: +44 20 8 622 3015

Fax: +44 20 8 622 3206

E-mail:

MobileandM2MSales@sierrawireless.com

Web site: www.sierrawireless.com

Sierra Wireless, the Sierra Wireless logo, and the red wave design are trademarks of Sierra Wireless. Heart of the Wireless Machine and AirLink are registered trademarks of Sierra Wireless. Other registered trademarks that appear on this package are the property of the respective owners.

© 2008 Sierra Wireless, Inc.

P/N 2150200 rev 1.0



SIERRA WIRELESS, CONNECTING PEOPLE AND SYSTEMS TO MOBILE BROADBAND NETWORKS AROUND THE WORLD

Sierra Wireless modems and software connect people all over the world with mobile broadband networks that keep them in touch, informed, and productive from wherever they need to be. The Company offers a diverse product portfolio addressing enterprise, consumer, original equipment manufacturer, machine-to-machine, and specialized vertical industry markets. Sierra Wireless also provides professional services to customers requiring expertise in wireless design, integration, and carrier certification.

For more information, please visit our website, www.sierrawireless.com.

SIERRA WIRELESS
AIRLINK™ RAVEN X
(EV-DO REV A NETWORKS)

Send and receive high-speed data

Network your equipment

Improve your business



SIERRA WIRELESS
HEART OF THE WIRELESS MACHINE



WIRELESS MOBILE DATA

Offices in Northern & Southern California
(tel) 650-726-7791/(fax) 650-350-3221
www.wirelessmobiledata.com

AIRLINK™ RAVEN X WIRELESS DATA COMMUNICATIONS PLATFORM FOR EV-DO REVISION A NETWORKS

■ Rugged Intelligence

Powered by ALEOS™ technology, the longstanding industry benchmark for reliable and feature-rich intelligence, the Raven X is a powerful, robust wireless networking and communications platform. With a high-speed processor and Ethernet port the Raven X is ideal for a wide range of financial and retail applications. Its rugged form factor, serial port and Class I Div 2 certification make it equally suited for industrial use.

■ Next Generation EV-DO Wireless Data

Featuring advanced processing power and expanded memory, the Raven X is optimized for high-speed cellular networks. Leveraging high-speed EV-DO Revision A technology, the Sierra Wireless AirLink Raven X provides wide area wireless data access at speeds up to 3.1 Mbps downlink and 1.8 Mbps uplink. Users can expect average upload speeds of 300 - 500 Kbps, and download speeds of 450 Kbps - 1.4 Mbps. In areas where EV-DO Rev A is not available the Raven X is backward compatible to EV-DO Rev 0 and CDMA 1x technology.

■ The ALEOS™ Advantage

ALEOS, the embedded core technology available only from Sierra Wireless, simplifies installation, operation and maintenance of any solution, and provides an always-on, always-aware intelligent connection for mission-critical applications. Benefits of ALEOS include:

- Persistent Network Connectivity
- Real-Time Notification
- Over-The-Air (OTA) Upgrades
- Wireless Optimized TCP/IP
- Extensive Machine Protocols
- Packet Level Diagnostics
- Device Management & Control
- Protocol Spoofing

■ AceWare™ Device Management

AceWare, the Sierra Wireless suite of tools and utilities, leveraging the intelligence of ALEOS, simplifies deployment as well as remote monitoring, control and management of the entire wireless solution.

AceManager

Remote device monitoring and configuration tool.

- Network Connectivity, Throughput and Signal Strength
- Real-Time Device Status and Health
- Comprehensive OTA Device Configuration and Firmware Updates

AceNet

Enterprise-grade device management application.

- One-to-Many Device Configuration and Management
- OTA Parameter Settings and Firmware/PRL Updates
- Logs Performance Statistics
- Charts Modem Behavior for Performance Analysis

AceView

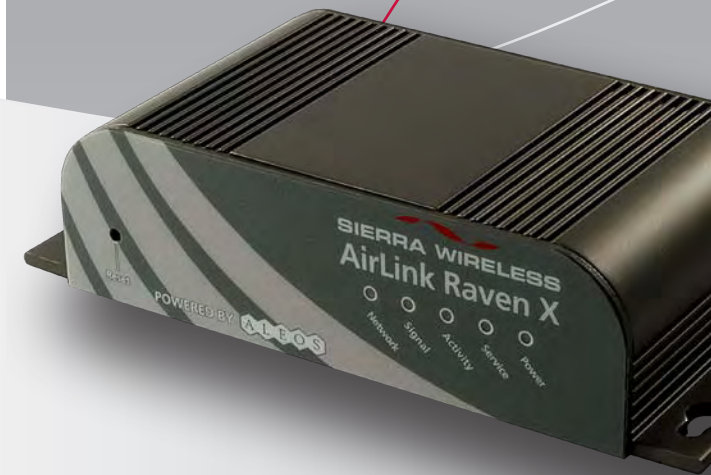
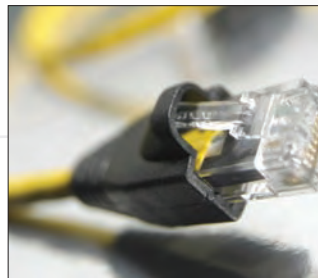
Efficient status and connection monitoring application.


- Low-Profile, Easy-To-Read, On-Screen User-Interface
- Modem Status, Connectivity, Signal Strength
- GPS Signal and Mapping

■ Sierra Wireless Reliability And Support

Sierra Wireless has over 13 years experience and a solid reputation for high quality data products backed by a dedicated field and call center support team. For customers, the AirLink™ brand means reliable, intelligent data devices that enable enterprise customers to enhance their operations while reducing costs and increasing revenues.

Applications	
✓	Primary/Back-up Internet Connection
✓	Advertising
✓	Streaming Media
✓	Video Surveillance
✓	Point-of-Sale
✓	Vending/Kiosks
✓	Remote Monitoring and Control
✓	Oil and Gas
✓	Electric



POWERED BY: ™