

AIRLINK™ PINPOINT XT MOBILE TRACKING DEVICE FOR GPRS NETWORKS

KEY FEATURES

■ Markets

Fleet Management
Automatic Vehicle Location (AVL)
Field Service
Mobile Resource Management (MRM)

■ Product Features

Embedded Intelligence
I/O Ports
Low Power Mode
Compact Design

■ Product Benefits

Persistent Network Connectivity
Rugged for Extreme Environments
Extensive Vehicle Telemetry
Remote Management and Configuration
Small Form Factor for Installation Flexibility

TECHNICAL SPECIFICATIONS

■ Technology

GPRS (MS-12)

■ Bands

Quad Band GPRS/EDGE
850/1900 and 900/1800 MHz

■ Environmental

Operating Temperature:
-30° to 70° Celsius
Storage Temperature:
-40° to 85° Celsius

■ Power Consumption: (@12V DC)

Transmit/Receive (Typical/Max): 250/300 mA
Idle: 163 mA
Low Power Mode: 124 mA
Input Voltage: 9 - 28V DC

■ Standards/Approvals

FCC
Industry Canada
Carrier specific approvals
RoHS compliant
PTCRB
CE

■ Host Interfaces

USB 2.0 (Mini-B5)
I/O: 4 digital inputs, 3 analog inputs, 2 relay outputs
Antenna Connection:
RF - 50 Ohm SMA
GPS - 50 Ohm SMA
RS-232: with adapter cable
(300 - 115200 baud)

■ Dimensions

76mm x 25mm x 112mm
317 grams

■ Application Interfaces

TCP/IP, UDP/IP, DHCP, HTTP, SNMP,
SMTP, SMS, MSCI, NMEA, TAIP, GPS
Binary

■ LED Indicators

GPS
Network
Power

■ For More Information

North America and Asia

Tel: +1 510 624 4200
Fax: +1 510 624 4299

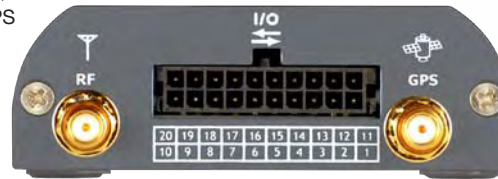
Europe

Tel: +44 20 8 622 3015
Fax: +44 20 8 622 3206

E-mail:

MobileandM2MSales@sierrawireless.com
Web site: www.sierrawireless.com

Sierra Wireless, the Sierra Wireless logo, and the red wave design are trademarks of Sierra Wireless. Heart of the Wireless Machine and AirLink are registered trademarks of Sierra Wireless. Other registered trademarks that appear on this package are the property of the respective owners.
© 2008 Sierra Wireless, Inc.
P/N 2150140 rev 1.0



**SIERRA WIRELESS, CONNECTING PEOPLE AND SYSTEMS TO MOBILE
BROADBAND NETWORKS AROUND THE WORLD**

Sierra Wireless modems and software connect people all over the world with mobile broadband networks that keep them in touch, informed, and productive from wherever they need to be. The Company offers a diverse product portfolio addressing enterprise, consumer, original equipment manufacturer, machine-to-machine, and specialized vertical industry markets. Sierra Wireless also provides professional services to customers requiring expertise in wireless design, integration, and carrier certification.

For more information, please visit our website, www.sierrawireless.com.



SIERRA WIRELESS
AIRLINK™ PINPOINT XT
(GPRS NETWORKS)

Manage your fleet

Increase efficiency

Improve your business



AIRLINK™ PINPOINT XT MOBILE TRACKING DEVICE FOR GPRS NETWORKS


■ Intelligent Tracking

Powered by ALEOS™ technology, the PinPoint XT is a powerful, cost effective vehicle tracking and asset management platform. The 16-channel GPS receiver constantly computes the vehicle location. Position reports are transmitted over the cellular data network based on time and/or distance. ALEOS offers multiple interface options for simple integration with third party applications. Flexible I/O capabilities also enable remote vehicle instrumentation, making the Pinpoint XT ideally suited for a broad range of fleet management, real-time dispatch, and AVL applications.

■ Exception Based Reporting

The PinPoint XT is embedded with a sophisticated exception based events reporting engine, powered by ALEOS. By utilizing an intuitive user interface a fleet administrator can select what data to collect, when to collect it and have the information sent via several delivery options, including e-Mail and SMS.

■ The ALEOS™ Advantage

ALEOS, the embedded core technology available only from  Sierra Wireless, simplifies installation, operation and maintenance of any solution, and provides an always-on, always-aware intelligent connection for mission-critical applications. Benefits of ALEOS include:

- Persistent Network Connectivity
- Real-Time Notification
- Over-The-Air (OTA) Upgrades
- Wireless Optimized TCP/IP
- Events Reporting
- Packet Level Diagnostics
- Device Management & Control
- Remote Application Protocol

■ AceWare™ Device Management

AceWare, the Sierra Wireless suite of tools and utilities, leveraging the intelligence of ALEOS, simplifies deployment as well as remote monitoring, control and management of the entire wireless solution.

AceManager

Remote device configuration and management tool.

- Network Connectivity, Throughput and Signal Strength
- Real-Time Device Status and Health
- Comprehensive OTA Device Configuration and Firmware Updates
- Events Reporting Interface

AceNet

Enterprise-grade device management application.

- One-to-Many Device Configuration and Management
- OTA Parameter Settings and Firmware/PRL Updates
- Logs Performance Statistics
- Charts Device Behavior for Performance Analysis

AceView

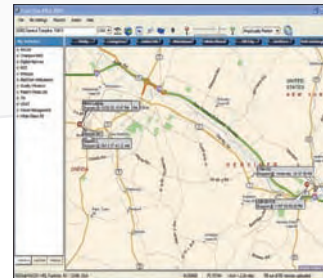
Efficient status and connection monitoring application.

- Low-Profile, Easy-To-Read, On-Screen User-Interface
- Device Status, Connectivity, Signal Strength
- GPS Signal and Mapping

■ Sierra Wireless Reliability And Support

Since 1993, Sierra Wireless has been delivering high quality data products backed by a dedicated field and call center support team. For customers, the AirLink™ brand means reliable, intelligent data devices that enable enterprise customers to enhance their operations while reducing costs and increasing revenues.

Applications	
✓	Fleet Management
✓	Automatic Vehicle Location
✓	Asset Tracking
✓	Vehicle Telemetry



POWERED BY: ™