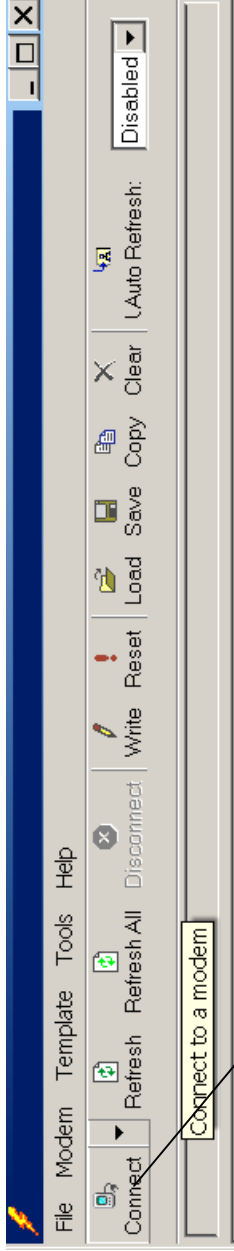
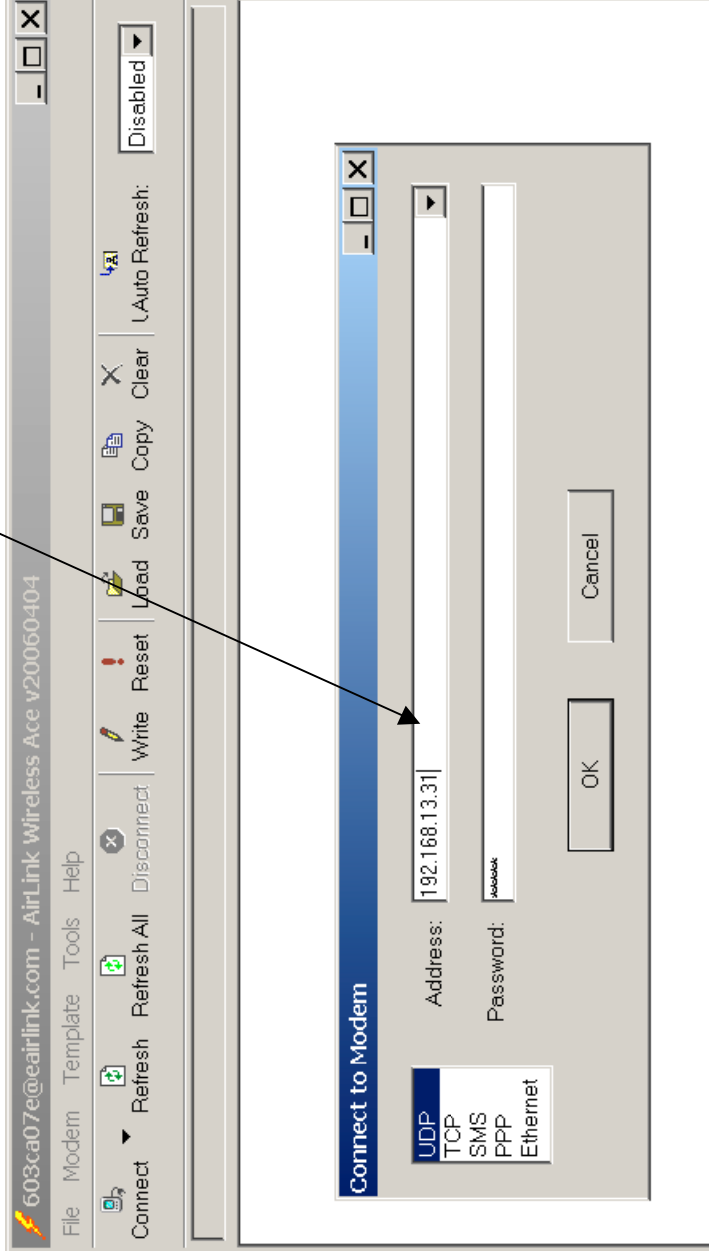


How to update PRL (Primary Roam List)  
Start Wireless Ace. You can download from: <http://www.sierrawireless.com/resources/support/AirLink/software/WirelessAceSetup.exe>

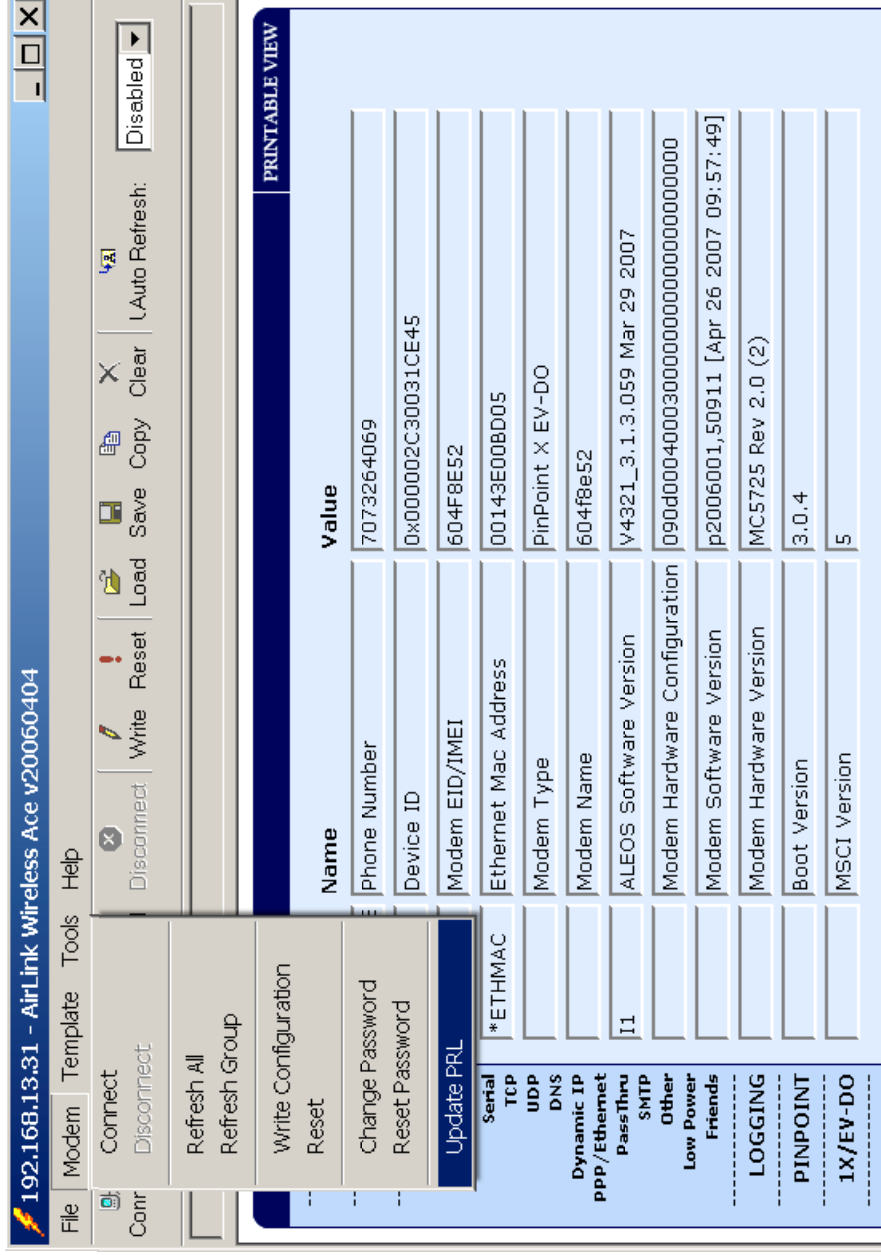


Connect your computer to the modem using an Ethernet Cable.  
Select CONNECT. At the pop up window type in 192.168.13.31, OK  
Note: password is 12345





Select UPDATE PRL from the drop down menu





# UPDATING.....

The screenshot shows a software window titled "192.168.13.31 - AirLink Wireless Ace v20060404". The interface is divided into several sections:

- Top Bar:** Contains menu items (File, Modem, Template, Tools, Help) and a toolbar with icons for Connect, Refresh, Refresh All, Disconnect, Write, Reset, Load, Save, Copy, Clear, and Auto Refresh (set to Disabled).
- Status Bar:** Shows "29 bytes received".
- Main Content Area:**
  - GROUPS:** A list of categories including INFO, STATUS, COMMON, Misc, USB, Serial, TCP, UDP, DNS, Dynamic IP, PPP/Ethernet, Pass Thru, SMTP, Other, Low Power, Friends, LOGGING, PINPOINT, 1X/EV-DO, and I/O.
  - MODEM DATA:** A table with columns "Name" and "Value".
 

AT	Name	Value
*NETPHONE	Phone Number	7073264069
*DEVICEID	Device ID	0x000002c30031CE45
	Modem EID/IMEI	604F8E52
*ETHMAC	Ethernet Mac Address	00143E008D05
	Modem Type	PinPoint X EV-DO
	Modem Name	604f8e52
  - Update PRL Dialog Box:** A modal window titled "Update PRL" with the following fields:
    - Carrier: Verizon
    - PRL version in modem: 50911
    - PRL version to apply: ONLINE
    - Master Subsidiary Lock: (empty)
 The dialog includes "Update" and "Close" buttons. A red message at the bottom reads "Waiting for ALEOS...178".
  - PRINTABLE VIEW:** A tab at the top right of the main content area.

**UPDATING is finished. Close the file and reset the modem**

192.168.13.31 - AirLink Wireless Ace v20060404

File Modem Template Tools Help

Connect Refresh Refresh All Disconnect Write Reset Load Save Copy Clear Auto Refresh Disabled

88 bytes received

GROUPS	MODEM DATA	PRINTABLE VIEW
---	<b>INFO</b>	
---	<b>STATUS</b>	
---	<b>COMMON</b>	
	Misc	
	USB	
	Serial	
	TCP	
	UDP	
	DNS	
	Dynamic IP	
	PPP/Ethernet	
	PassThru	
	SMTP	
	Other	
	Low Power	
	Friends	
---	<b>LOGGING</b>	
---	<b>PINPOINT</b>	
---	<b>IX/EV-DO</b>	
---	<b>I/O</b>	
	<b>AT</b>	<b>Value</b>
	*NETPHONE	7073264069
	*DEVICEID	0x000002C30031CE45
	Modem EID/IMEI	604F8E52
	*ETHMAC	00143E008D05
	Modem Type	PinPoint X EV-DO
	Modem Name	604f8e52
	<b>Update PRL</b>	Mar 29 2007
	Carrier:	Verizon
	PRL version in modem:	50811
	PRL version to apply:	ONLINE
	Master Subsidiary Lock:	
		Update complete
		Update
		Close