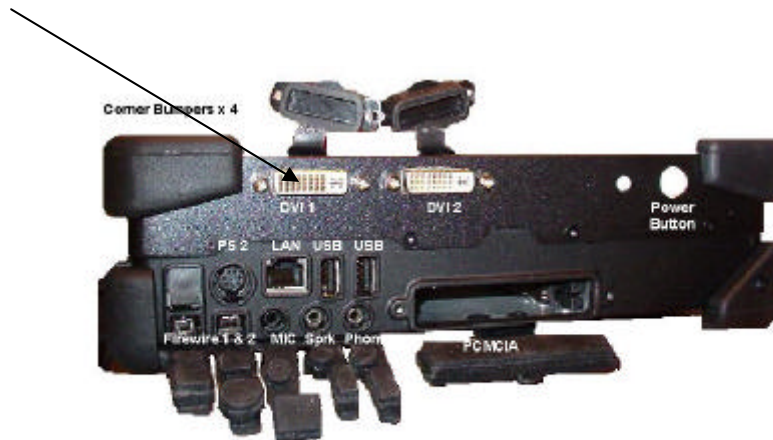


This instruction is for SINGLE screen applications only. For dual screen, contact AMREL Customer Support at 800 882 6736. See page 2 for downloading from the web instead of using the CD-ROM

Connect the DVI cable to PORT 1 for single screen applications!



LEFT SIDE VIEW

To calibrate the Touch Screen:

INSTALLING THE TOUCH DRIVER FOR THE MT786 ROCKY MOBILE

FROM THE CD: **FOLLOW ALL STEPS**

From the START -> RUN -> BROWSE

D DRIVE: URX6A11

- 1. -> DP860 SELECT OPEN
- 2. -> DRIVER SELECT OPEN
- 3. -> TOUCH SCREEN SELECT OPEN
- 4. -> DP5100 SELECT OPEN
- 5. -> DRIVER V2.0 SELECT OPEN
- 6. -> SETUP SELECT OPEN
- RUN: -> OK

The setup program will run then,

- > NEXT
- > ACCEPT THE TERMS OF USE, NEXT
- > INSTALL

A screen pops up about Windows Logo Testing select "Continue Anyway" Select YES
-> FINISH

In the Tray, a blue box with yellow letters "PM" appears - Right Click on the PM Button

Select Control Panel

Select Calibrate.

To Calibrate **use a plastic pointing device** to accurately select the 5 dots, one at a time

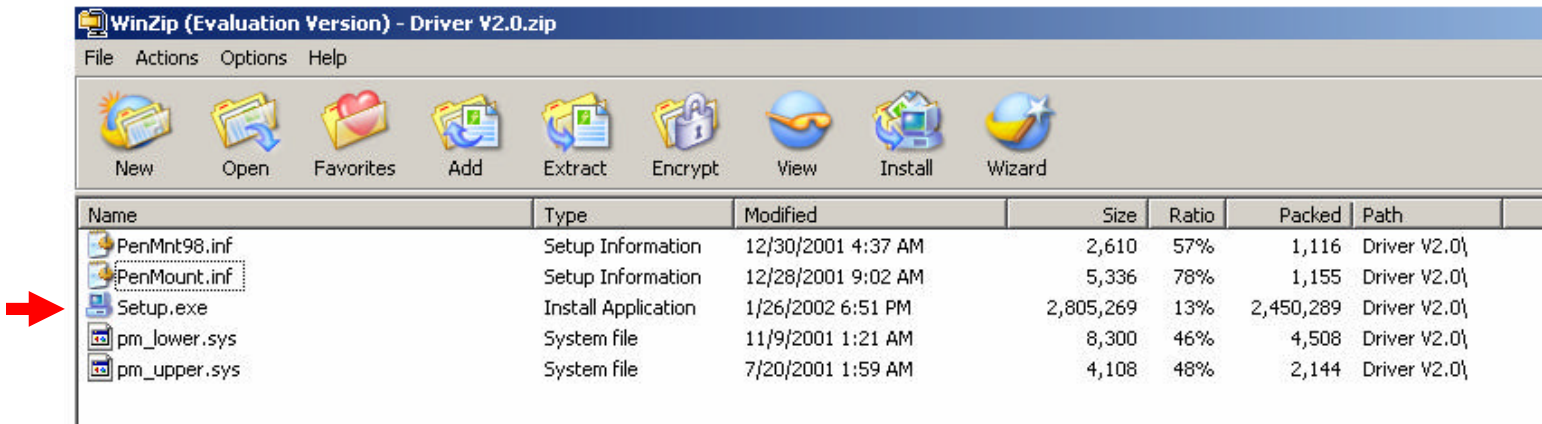
Select OK

From the control panel you can turn the beep sound on or off (select off).
You can also select the right mouse button function.

To download from our web site, go to:

http://www.dsfreeman.com/MT786_TS_Driver.zip

1. Select SETUP.exe
2. Accept the terms of the agreement
3. Select INSTALL

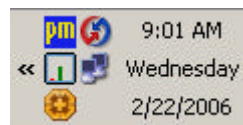


The setup program will run then,

- > NEXT
- > ACCEPT THE TERMS OF USE, NEXT
- > INSTALL

A screen pops up about Windows Logo Testing select "Continue Anyway" Select YES
-> FINISH

In the Tray, a blue box with yellow letters "PM" appears - Right Click on the PM Button



Select Control Panel
Select Calibrate.

To Calibrate **use a plastic pointing device** to accurately select the 5 dots, one at a time

Select OK

From the control panel you can turn the beep sound on or off (select off). You can also select the right mouse button function.