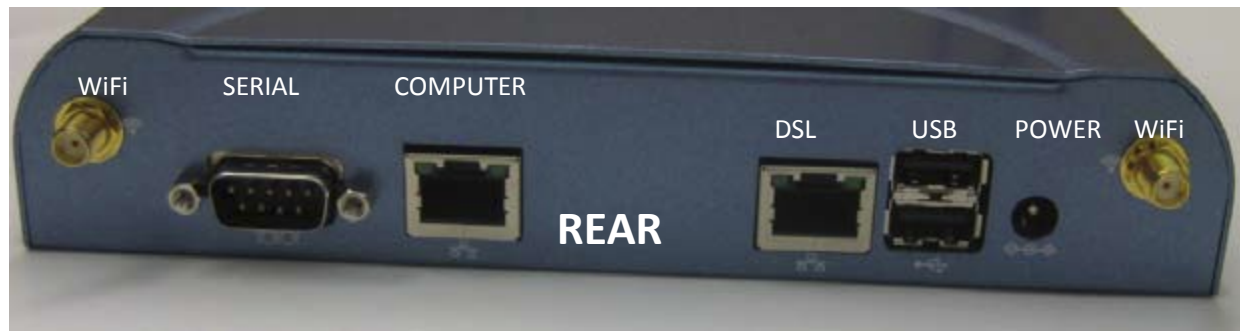
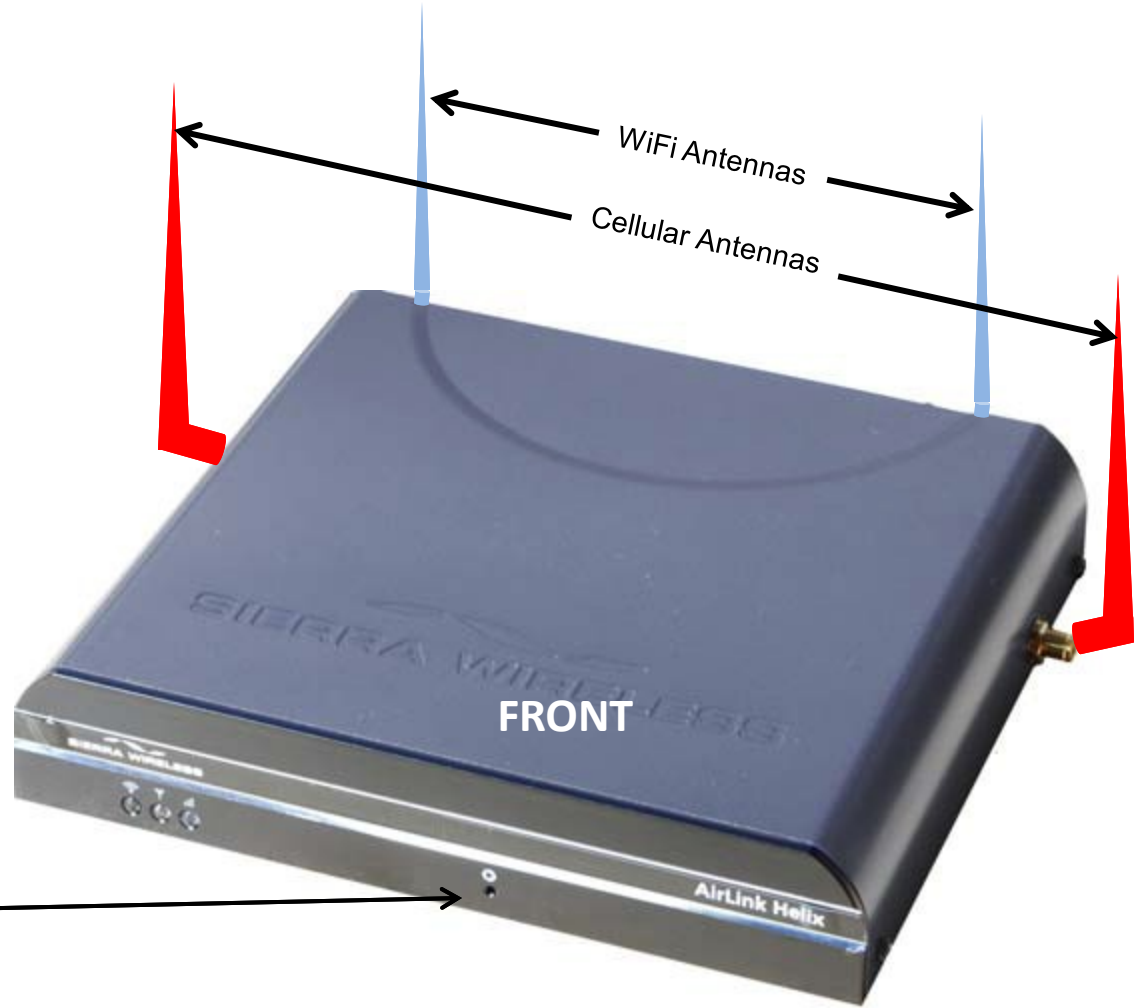


HELIX KEY FEATURES

- Redundant Connection to T-1 or Cable Modem
- Automatic Cutover
- Cellular Modem Built In (Carrier # 1)
- Ethernet Interface
- WiFi Interface (on specific models)
- USB Modem Back Up Option

Connection Settings





Antenna Placement

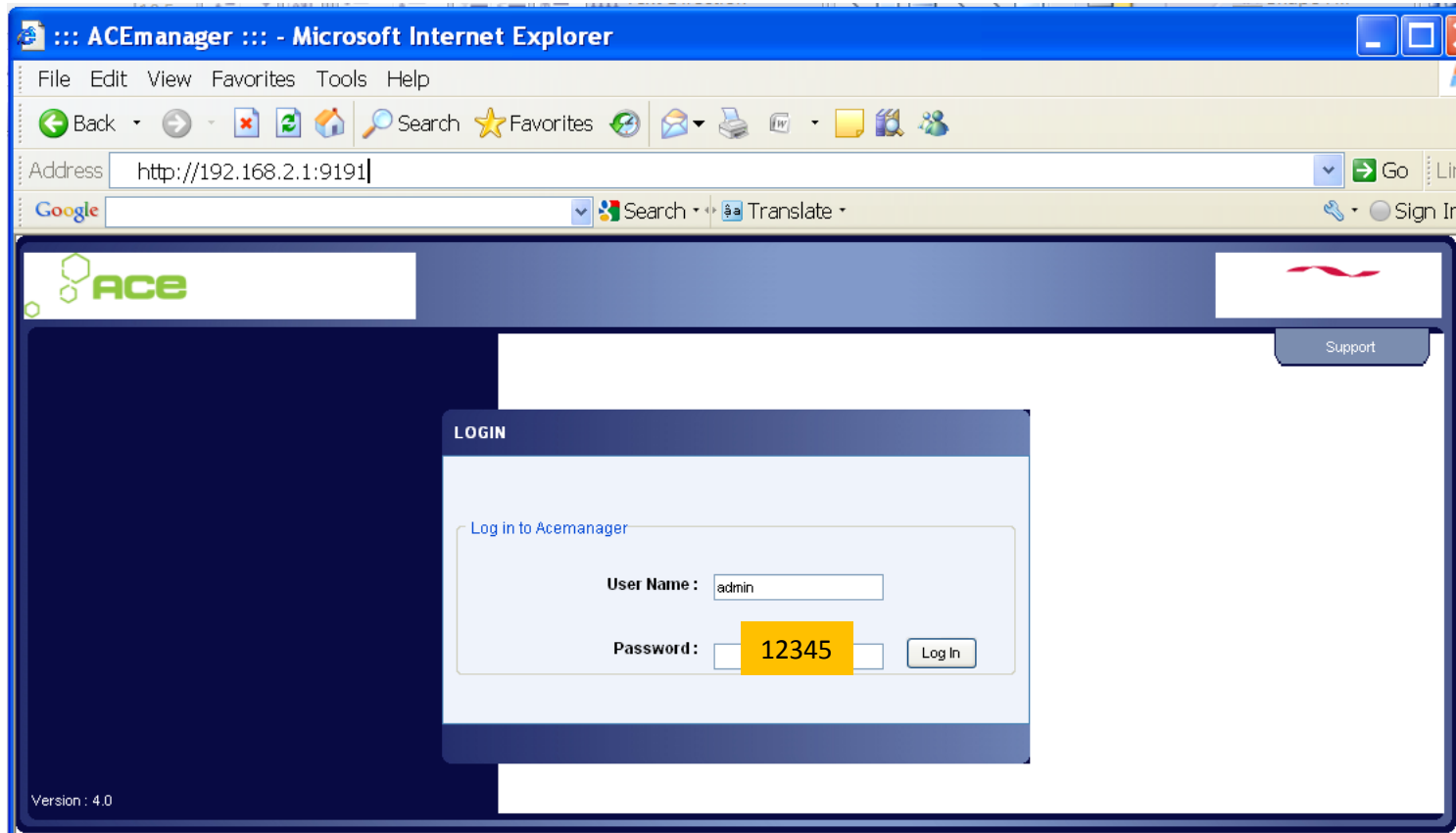
Helix Shown with WiFi and Cellular antennas and Mounting Plate

4



Web
Browser

http://192.168.2.1:9191
User Name: admin
User Password: 12345



Navigation tabs: **Status** | WAN/Cellular | LAN/WiFi | VPN | Security | Services | Admin

Last updated time : 09-06-2009 19:19:46

| | | |
|---------------------|------------------------|-----------------|
| Home | Backhaul Mode | Cellular |
| WAN/Cellular | Current WAN IP Address | 166.154.255.124 |
| LAN/WiFi | Network State | Connected |
| VPN | RSSI (dBm) | -78 |
| Security | Network Operator | Verizon |
| Services | Network Service Type | EV-DO, Rev A |
| About | ALEOS Software Version | 4.0.41.005 |
| | Channel | 466 |
| | Modem Name | Helix RT |

WAN/Cellular Screen

Select the pull-down menu for Backhaul Mode:

- Select **WAN** Failover Modem
- Select **ETHERNET** as primary interface

The screenshot shows the WAN/Cellular configuration interface. At the top, there are tabs for Status, WAN/Cellular, LAN/WiFi, VPN, Security, Services, and Admin. Below the tabs, the page title is 'WAN/Cellular' and the last updated time is '09-06-2009 17:31:03'. On the right side, there are buttons for 'Expand All', 'Apply', 'Refresh', and 'Cancel'. The main configuration area is divided into sections: 'WAN Mode', 'WAN Failover', and 'Keep Alive'. In the 'WAN Mode' section, the 'Backhaul Mode' is set to 'WAN Failover'. In the 'WAN Failover' section, the 'Ethernet WAN IP' is set to 'DHCP', the 'Primary Interface' is set to 'Ethernet', and the 'Primary Route IP' is '216.92.96.182'. In the 'Keep Alive' section, the 'Keepalive IP Address' is '216.92.96.182' and the 'Keepalive Ping Time' is '3600'. There are three annotations: a yellow box with a note, and two arrows pointing to dropdown menus. The note says: 'Note: If Static IP is to be utilized set your WAN configuration otherwise just use DHCP as default'. One arrow points to the 'Ethernet WAN IP' dropdown menu, and another points to the 'Backhaul Mode' dropdown menu. A third arrow points to the 'Primary Interface' dropdown menu, which is currently set to 'Ethernet'.

Last updated time : 09-06-2009 17:31:03

Expand All Apply Refresh Cancel

WAN/Cellular

[-] WAN Mode

Backhaul Mode WAN Failover

Network Credentials Default (US Only)

[-] WAN Failover

Ethernet WAN IP DHCP

IP Address

IP Netmask 255.255.255.0

Gateway IP

DNS 1

DNS 2

Primary Interface Ethernet

Primary Route IP 216.92.96.182

Interval (Sec) 10

[-] Keep Alive

Keepalive IP Address 216.92.96.182

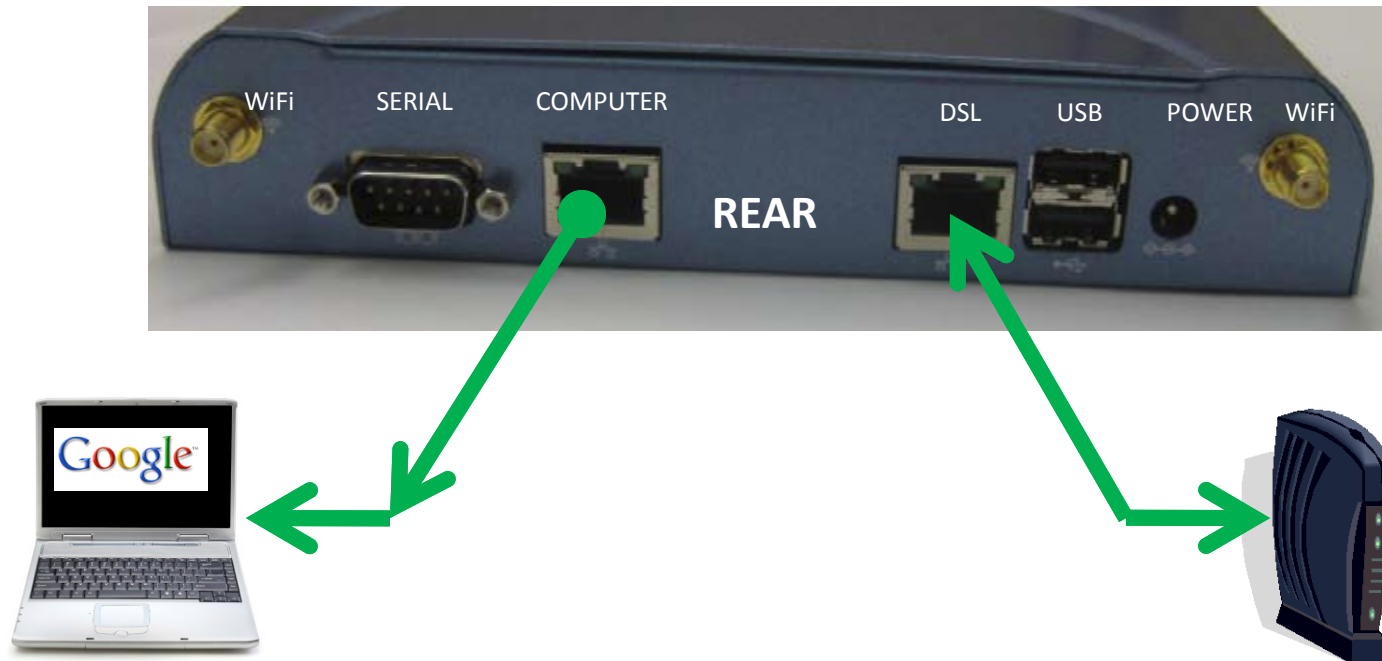
Keepalive Ping Time 3600

Note:
If Static IP is to be utilized set your WAN configuration otherwise just use DHCP as default

Speed
Test

With your cable modem plugged in
run a speed test

<http://www.speedtest.net>



Speed Test

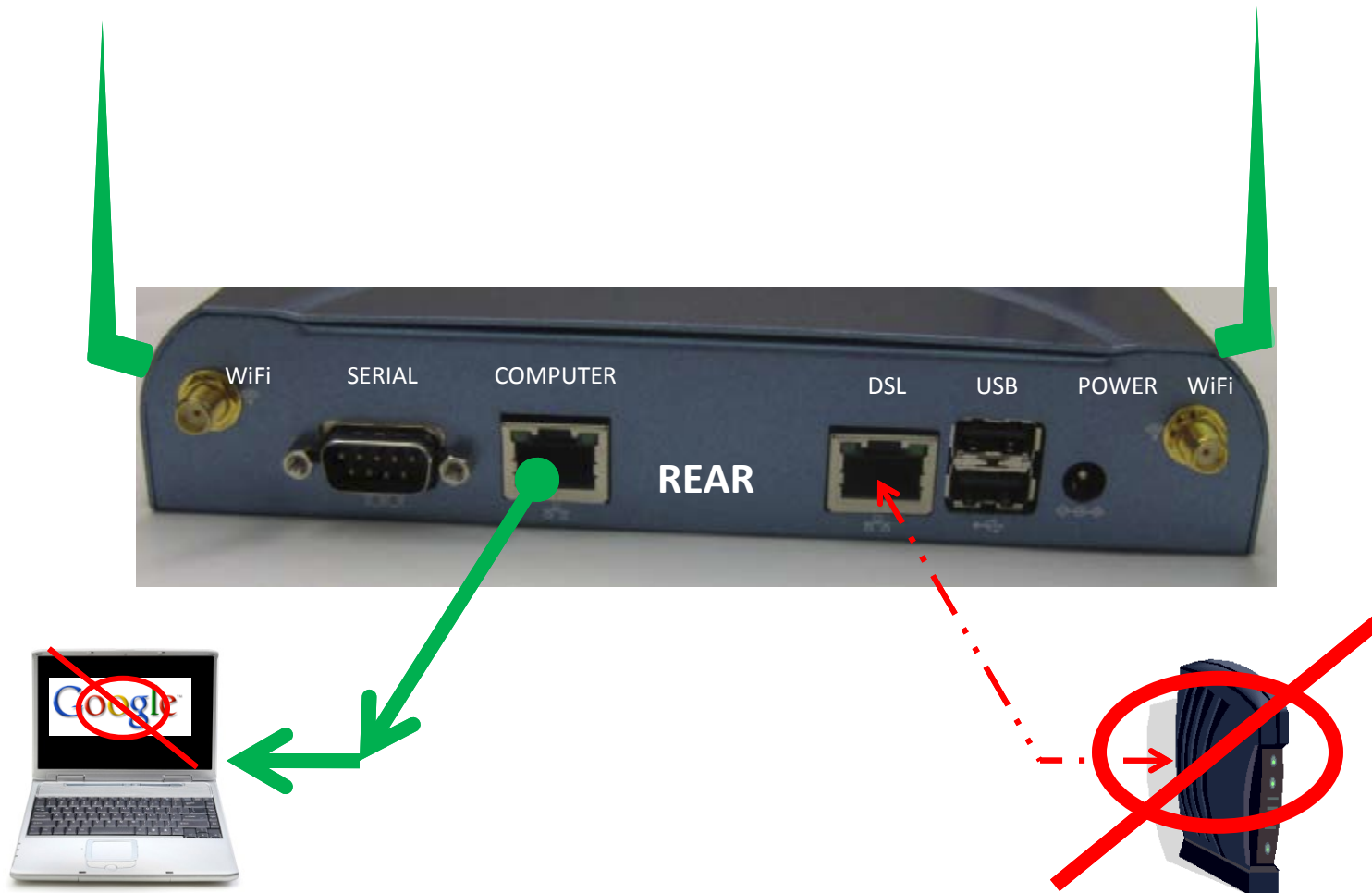
Speed test with DSL Cable modem
plugged in shows 9.2Mbps

SPEEDTEST.NET



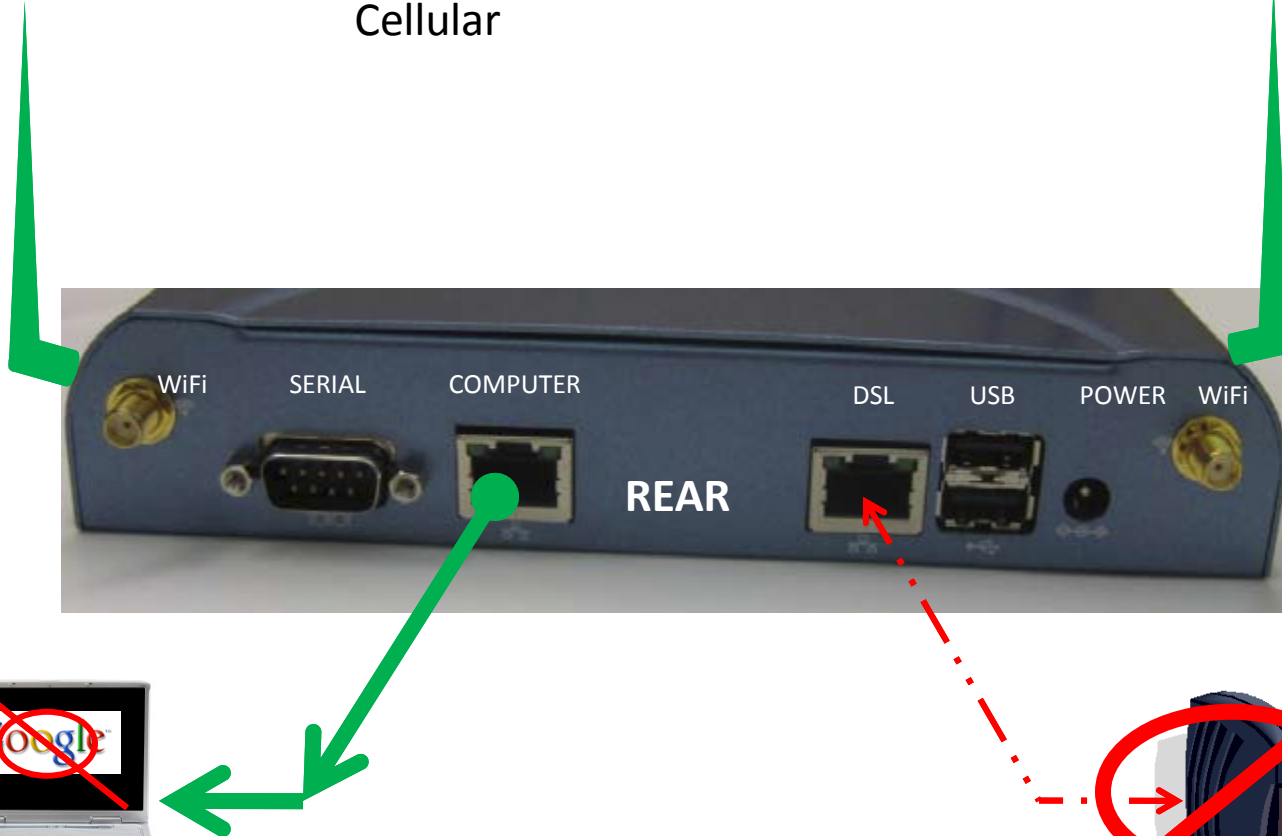
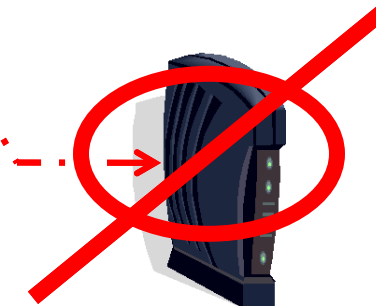
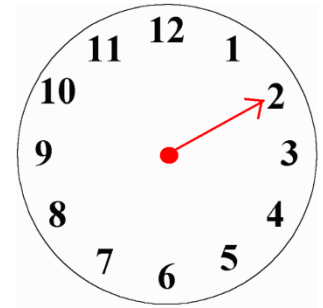
Speed
Test

Remove Ethernet Cable between the
Cable Modem and the Helix DSL Connection.



Speed Test

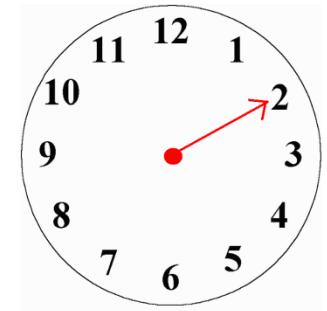
Remove Ethernet Cable between the Cable Modem and the Helix DSL Connection. Within 10 seconds the Helix will switch to Cellular



Speed Test

Remove Ethernet Cable between the Cable Modem and the Helix DSL Connection. Within 10 seconds the Helix will switch to Cellular and reestablish the connection
Run a speed test

<http://www.speedtest.net>

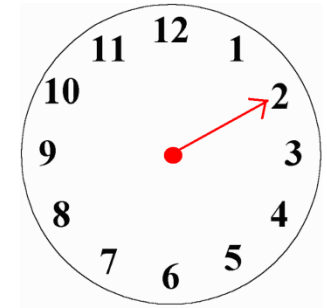


Speed Test

Cellular Modem switches over within 10 seconds and establishes a reliable back-up automatically

<http://www.speedtest.net>

SPEEDTEST.NET



USB Back Up Option

The Helix support a single secondary back up USB data modem, either AT&T Compass 895 or Sprint 598.

To use, turn the Helix Off. Insert the USB modem in the rear socket, then Power Up the modem.

The USB modem is recognized by the Helix and replaces the internal modem



There are a number of additional settings including VPN, Security, WiFi, WEP, IPSec Tunnel, GRE etc. These settings can be explored by selecting the link below:

http://www.sierrawireless.com/resources/support/AirLink/docs/Helix_User_Guide_Rev_3.0.pdf

Last updated time : 09-06-2009 19:22:38

Apply Refresh Cancel

| | | |
|-------------------|-------------------------|----------------------|
| Addressing | Primary DNS | 66.174.92.14 |
| WiFi | Secondary DNS | 69.78.96.14 |
| Global DNS | DNS Override | Disabled |
| | Alternate Primary DNS | <input type="text"/> |
| | Alternate Secondary DNS | <input type="text"/> |