

# TAIP, Ethernet GPS Settings

Wireless Mobydata, Inc 650 726 7791 www.wirelessmobydata.com

GROUPS	MODEM DATA			PRINTABLE VIEW
----- <b>INFO</b> -----	<b>AT</b>	<b>Name</b>	<b>Value</b>	<b>New Value</b>
<b>STATUS</b> -----	*PPIP	Report Server IP	192.0.2.1	<input type="text" value="192.0.2.1"/>
<b>COMMON</b>	*PPPORT	Server Port	22335	<input type="text" value="22335"/>
Misc	*PPTIME	Report Interval Time (Seconds)	0	<input type="text" value="0"/>
USB	*PPDIST	Report Interval Distance (100 Meters)	0	<input type="text" value="0"/>
Serial	*PPTSV	Stationary Vehicle Timer (Minutes)	0	<input type="text" value="0"/>
TCP	*PPGPSR	GPS Report Type (hex)	12	<input type="text" value="12-GPS+Date"/>
UDP	*PPSNF	SNF Enable	0	<div style="border: 1px solid black; padding: 2px;"><ul style="list-style-type: none"><li>11-GPS Data</li><li>12-GPS+Date</li><li>13-GPS+Date+RF</li><li>14-GPS+Date+RF+EIO</li><li>46-Events Report 6</li><li>E0-NMEA GGA+VTG</li><li>E1-NMEA GGA+VTG+RMC</li><li><b>F0-TAIP data</b></li><li>F1-Compact TAIP data</li><li>F2-TAIP LN report</li><li>F3-TAIP TM report</li><li>D0-XORA data</li></ul></div>
DNS	*PPDEVID	Use Device ID in Location Reports	0	
Dynamic IP	*PPSNFR	SNF Reliable Mode	0	
PPP/Ethernet	*PPSNFB	SNF Mode	0	
PassThru	*PPSNFM	SNF Minimum Reports	0	
SMTP	*PPMAXRETRIES	SNF Simple Reliable Max. Retries	10	
Other		Redundant Server 1 IP	<input type="text"/>	<input type="text"/>
Low Power		Redundant Server 2 IP	<input type="text"/>	<input type="text"/>
Firewall				
Port Forwarding				
----- <b>LOGGING</b> -----				
<b>GPS</b>				
Server 1				
Server 2				
Server 3				
Server 4				
Misc				
Serial Port				
-----				

From the Ace Manager Window, select SERVER 1

# TAIP, Ethernet GPS Settings

Wireless Mobydata, Inc 650 726 7791 www.wirelessmobydata.com

GROUPS	MODEM DATA			PRINTABLE VIEW
----- <b>INFO</b> ----- <b>STATUS</b> ----- <b>COMMON</b> Misc USB Serial TCP UDP DNS Dynamic IP PPP/Ethernet PassThru SMTP Other Low Power Firewall Port Forwarding ----- <b>LOGGING</b> ----- <b>GPS</b> Server 1 Server 2 Server 3 Server 4 Misc Serial Port -----	<b>AT</b>	<b>Name</b>	<b>Value</b>	<b>New Value</b>
	*PPIP	Report Server IP	192.0.2.1	<input type="text" value="192.0.2.1"/>
	*PPPORT	Server Port	22335	<input type="text" value="22335"/>
	*PPTIME	Report Interval Time (Seconds)	0	<input type="text" value="0"/>
	*PPDIST	Report Interval Distance (100 Meters)	0	<input type="text" value="0"/>
	*PPTSV	Stationary Vehicle Timer (Minutes)	0	<input type="text" value="0"/>
	*PPGPSR	GPS Report Type (hex)	12	<input type="text" value="12-GPS+Date"/>
	*PPSNF	SNF Enable	0	<input type="text" value="11-GPS Data"/>
	*PPDEVID	Use Device ID in Location Reports	0	<input type="text" value="12-GPS+Date"/>
	*PPSNFR	SNF Reliable Mode	0	<input type="text" value="13-GPS+Date+RF"/>
	*PPSNFB	SNF Mode	0	<input type="text" value="14-GPS+Date+RF+EIO"/>
	*PPSNFM	SNF Minimum Reports	0	<input type="text" value="46-Events Report 6"/>
	*PPMAXRETRIES	SNF Simple Reliable Max. Retries	10	<input type="text" value="E0-NMEA GGA+VTG"/>
		Redundant Server 1 IP	<input type="text"/>	<input type="text" value="E1-NMEA GGA+VTG+RMC"/>
		Redundant Server 2 IP	<input type="text"/>	<input type="text" value="F0-TAIP data"/>

Enter the IP address of your GPS Server, example: 72.55.129.21

# TAIP, Ethernet GPS Settings

Wireless Mobydata, Inc 650 726 7791 www.wirelessmobydata.com

GROUPS	MODEM DATA			PRINTABLE VIEW
----- <b>INFO</b> ----- <b>STATUS</b> ----- <b>COMMON</b>	<b>AT</b>	<b>Name</b>	<b>Value</b>	<b>New Value</b>
Misc	*PPIP	Report Server IP	192.0.2.1	75.55.129.21
USB	*PPPORT	Server Port	22335	<input type="text"/>
Serial	*PPDIST	Report Interval Distance (100 Meters)	0	<input type="text"/>
TCP	*PPTIME	Report Interval Time (Seconds)	0	<input type="text"/>
UDP	*PPDSV	Stationary Vehicle Timer (Minutes)	0	<input type="text"/>
DNS	*PPGPSR	GPS Report Type (hex)	12	12-GPS+Date
Dynamic IP	*PPSNF	SNF Enable	0	11-GPS Data 12-GPS+Date 13-GPS+Date+RF 14-GPS+Date+RF+EIO 46-Events Report 6 E0-NMEA GGA+VTG E1-NMEA GGA+VTG+RMC
PPP/Ethernet	*PPDEVID	Use Device ID in Location Reports	0	F0-TAIP data F1-Compact TAIP data F2-TAIP LN report F3-TAIP TM report D0-XORA data
PassThru	*PPSNFR	SNF Reliable Mode	0	
SMTP	*PPSNFB	SNF Mode	0	
Other	*PPSNFM	SNF Minimum Reports	0	
Low Power	*PPMAXRETRIES	SNF Simple Reliable Max. Retries	10	
Firewall		Redundant Server 1 IP		
Port Forwarding		Redundant Server 2 IP		
----- <b>LOGGING</b> ----- <b>GPS</b>				
Server 1				
Server 2				
Server 3				
Server 4				
Misc				
Serial Port				
-----				

Enter the port number of your GPS Server, example: **1091**

# TAIP, Ethernet GPS Settings

Wireless Mobydata, Inc 650 726 7791 www.wirelessmobydata.com

GROUPS	MODEM DATA			PRINTABLE VIEW
----- <b>INFO</b> ----- <b>STATUS</b> ----- <b>COMMON</b>	<b>AT</b>	<b>Name</b>	<b>Value</b>	<b>New Value</b>
Misc	*PPIP	Report Server IP	192.0.2.1	75.55.129.21
USB	*PPPORT	Server Port	22335	1091
Serial	*PPTIME	Report Interval Time (Seconds)	0	<input type="text" value=""/>
TCP	*PPDIST	Report Interval Distance (100 Meters)	0	0
UDP	*PPTSV	Stationary Vehicle Timer (Minutes)	0	0
DNS	*PPGPSR	GPS Report Type (hex)	12	12-GPS+Date
Dynamic IP	*PPSNF	SNF Enable	0	11-GPS Data 12-GPS+Date 13-GPS+Date+RF 14-GPS+Date+RF+EIO 46-Events Report 6 E0-NMEA GGA+VTG E1-NMEA GGA+VTG+RMC
PPP/Ethernet	*PPDEVID	Use Device ID in Location Reports	0	F0-TAIP data F1-Compact TAIP data F2-TAIP LN report F3-TAIP TM report D0-XORA data
PassThru	*PPSNFR	SNF Reliable Mode	0	
SMTP	*PPSNFB	SNF Mode	0	
Other	*PPSNFM	SNF Minimum Reports	0	
Low Power	*PPMAXRETRIES	SNF Simple Reliable Max. Retries	10	
Firewall		Redundant Server 1 IP		
Port Forwarding		Redundant Server 2 IP		
----- <b>LOGGING</b> ----- <b>GPS</b>				
Server 1				
Server 2				
Server 3				
Server 4				
Misc				
Serial Port				
-----				

Enter the report interval in seconds, example 30 for updates every 30 seconds, 60 for updates every 60 seconds etc

# TAIP, Ethernet GPS Settings

Wireless Mobydata, Inc 650 726 7791 www.wirelessmobydata.com

GROUPS	MODEM DATA			PRINTABLE VIEW
----- <b>INFO</b> -----	<b>AT</b>	<b>Name</b>	<b>Value</b>	<b>New Value</b>
<b>STATUS</b> -----	*PPIP	Report Server IP	192.0.2.1	75.55.129.21
<b>COMMON</b>	*PPPORT	Server Port	22335	1091
Misc	*PPTIME	Report Interval Time (Seconds)	0	30
USB	*PPDIST	Report Interval Distance (100 Meters)	0	<input type="text"/>
Serial	*PPTSV	Stationary Vehicle Timer (Minutes)	0	0
TCP	*PPGPSR	GPS Report Type (hex)	12	12-GPS+Date
UDP	*PPSNF	SNF Enable	0	11-GPS Data 12-GPS+Date 13-GPS+Date+RF 14-GPS+Date+RF+EIO 46-Events Report 6 E0-NMEA GGA+VTG E1-NMEA GGA+VTG+RMC
DNS	*PPDEVID	Use Device ID in Location Reports	0	F0-TAIP data
Dynamic IP	*PPSNFR	SNF Reliable Mode	0	F1-Compact TAIP data
PPP/Ethernet	*PPSNFB	SNF Mode	0	F2-TAIP LN report
PassThru	*PPSNFM	SNF Minimum Reports	0	F3-TAIP TM report
SMTP	*PPMAXRETRIES	SNF Simple Reliable Max. Retries	10	D0-XORA data
Other				
Low Power				
Firewall				
Port Forwarding				
----- <b>LOGGING</b> -----				
<b>GPS</b>				
Server 1		Redundant Server 1 IP		
Server 2				
Server 3		Redundant Server 2 IP		
Server 4				
Misc				
Serial Port				
-----				

Enter the report distance in 100 meters. This is the distance the vehicle will travel before an update is sent. Thus a TIME (\*\*PPTIME) or DISTANCE (\*\*PPDIST) setting can be obtained. Example: 10 (10x100= 1000 meters)

# TAIP, Ethernet GPS Settings


Wireless Mobydata, Inc 650 726 7791 www.wirelessmobydata.com

GROUPS	MODEM DATA			PRINTABLE VIEW
----- <b>INFO</b> -----	<b>AT</b>	<b>Name</b>	<b>Value</b>	<b>New Value</b>
<b>STATUS</b> -----	*PPIP	Report Server IP	192.0.2.1	75.55.129.21
<b>COMMON</b>	*PPPORT	Server Port	22335	1091
Misc	*PPTIME	Report Interval Time (Seconds)	0	30
USB	*PPDIST	Report Interval Distance (100 Meters)	0	10
Serial	*PPTSV	Stationary Vehicle Timer (Minutes)	0	<input type="text"/>
TCP	*PPGPSR	GPS Report Type (hex)	12	12-GPS+Date
UDP	*PPSNF	SNF Enable	0	11-GPS Data 12-GPS+Date 13-GPS+Date+RF 14-GPS+Date+RF+EIO 46-Events Report 6 E0-NMEA GGA+VTG E1-NMEA GGA+VTG+RMC
DNS	*PPDEVID	Use Device ID in Location Reports	0	F0-TAIP data
Dynamic IP	*PPSNFR	SNF Reliable Mode	0	F1-Compact TAIP data
PPP/Ethernet	*PPSNFB	SNF Mode	0	F2-TAIP LN report
PassThru	*PPSNFM	SNF Minimum Reports	0	F3-TAIP TM report
SMTP	*PPMAXRETRIES	SNF Simple Reliable Max. Retries	10	D0-XORA data
Other				
Low Power				
Firewall				
Port Forwarding				
----- <b>LOGGING</b> -----				
<b>GPS</b>				
Server 1		Redundant Server 1 IP		
Server 2				
Server 3				
Server 4		Redundant Server 2 IP		
Misc				
Serial Port				
-----				

Enter the stationary time in minutes. This is the time the vehicle will send a report when it has not moved. Example: 25. This means every 25 minutes a location report will be sent if the vehicle has not moved

# TAIP, Ethernet GPS Settings

Wireless Mobydata, Inc 650 726 7791 www.wirelessmobydata.com

GROUPS	MODEM DATA			PRINTABLE VIEW
----- <b>INFO</b> -----	<b>AT</b>	<b>Name</b>	<b>Value</b>	<b>New Value</b>
<b>STATUS</b> -----	*PPIP	Report Server IP	192.0.2.1	75.55.129.21
<b>COMMON</b>	*PPPORT	Server Port	22335	1091
Misc	*PPTIME	Report Interval Time (Seconds)	0	30
USB	*PPDIST	Report Interval Distance (100 Meters)	0	10
Serial	*PPTSV	Stationary Vehicle Timer (Minutes)	0	25
TCP	*PPGPSR	GPS Report Type (hex)	12	
UDP	*PPSNF	SNF Enable	0	11-GPS Data 12-GPS+Date 13-GPS+Date+RF 14-GPS+Date+RF+EIO 46-Events Report 6 E0-NMEA GGA+VTG E1-NMEA GGA+VTG+RMC
DNS	*PPDEVID	Use Device ID in Location Reports	0	F0-TAIP data
Dynamic IP	*PPSNFR	SNF Reliable Mode	0	F1-Compact TAIP data
PPP/Ethernet	*PPSNFB	SNF Mode	0	F2-TAIP LN report
PassThru	*PPSNFM	SNF Minimum Reports	0	F3-TAIP TM report
SMTP	*PPMAXRETRIES	SNF Simple Reliable Max. Retries	10	D0-XORA data
Other				
Low Power				
Firewall				
Port Forwarding				
----- <b>LOGGING</b> -----				
<b>GPS</b>				
Server 1		Redundant Server 1 IP		
Server 2		Redundant Server 2 IP		
Server 3				
Server 4				
Misc				
Serial Port				
-----				

Select Message Type from the pull down menu.  
In this example select F0 – TAIP Data

# TAIP, Ethernet GPS Settings

Wireless Mobydata, Inc 650 726 7791 www.wirelessmobydata.com

GROUPS	MODEM DATA			PRINTABLE VIEW
----- <b>INFO</b> -----	<b>AT</b>	<b>Name</b>	<b>Value</b>	<b>New Value</b>
<b>STATUS</b> -----	*PPIP	Report Server IP	192.0.2.1	75.55.129.21
<b>COMMON</b>	*PPPORT	Server Port	22335	1091
Misc	*PPTIME	Report Interval Time (Seconds)	0	30
USB	*PPDIST	Report Interval Distance (100 Meters)	0	10
Serial	*PPTSV	Stationary Vehicle Timer (Minutes)	0	25
TCP	*PPGPSR	GPS Report Type (hex)	12	F0
UDP	*PPSNF	SNF Enable	0	11-GPS Data 12-GPS+Date 13-GPS+Date+RF 14-GPS+Date+RF+EIO 46-Events Report 6 E0-NMEA GGA+VTG E1-NMEA GGA+VTG+R
DNS	*PPDEVID	Use Device ID in Location Reports	0	<b>F0-TAIP data</b> F1-Compact TAIP data F2-TAIP LN report F3-TAIP TM report D0-XORA data
Dynamic IP	*PPSNFR	SNF Reliable Mode	0	
PPP/Ethernet	*PPSNFB	SNF Mode	0	
PassThru	*PPSNFM	SNF Minimum Reports	0	
SMTP	*PPMAXRETRIES	SNF Simple Reliable Max. Retries	10	
Other				
Low Power				
Firewall				
Port Forwarding				
----- <b>LOGGING</b> -----				
<b>GPS</b>				
Server 1		Redundant Server 1 IP		
Server 2				
Server 3		Redundant Server 2 IP		
Server 4				
Misc				
Serial Port				
-----				

Select Message Type from the pull down menu.  
In this example select F0 – TAIP Data

# Local Serial GPS Settings

Wireless Mobydata, Inc 650 726 7791 www.wirelessmobydata.com

GROUPS	MODEM DATA				PRINTABLE VIEW
----- <b>INFO</b> -----	<b>AT</b>	<b>Name</b>	<b>Value</b>	<b>New Value</b>	
<b>STATUS</b> -----	S23	Configure Serial Port	115200,8N1	115200,8N1	
<b>COMMON</b>	\Q	Serial Port Flow Control	2	2-Hardware	
Misc	S50	Data Forwarding Timeout	1	1	
USB	S51	Data Forwarding Character	0	0	
<u>Serial</u>	E	DB9 Serial Echo	0	0-OFF	
TCP					
UDP					
DNS					

From the Ace Manager Window, select COMMON, Serial

# Local Serial GPS Settings

Wireless Mobydata, Inc 650 726 7791 www.wirelessmobydata.com

GROUPS	MODEM DATA			PRINTABLE VIEW
----- <b>INFO</b> ----- <b>STATUS</b> ----- <b>COMMON</b> Misc USB <u>Serial</u> TCP UDP DNS	<b>AT</b>	<b>Name</b>	<b>Value</b>	<b>New Value</b>
	S23	Configure Serial Port	115200,8N1	<input type="text"/>
	\Q	Serial Port Flow Control	2	2-Hardware
	S50	Data Forwarding Timeout	1	1
	S51	Data Forwarding Character	0	0
	E	DB9 Serial Echo	0	0-OFF



Enter the data speed for you application. Example, if using MS Streets and Trips, enter 4800,8N1

# Local Serial GPS Settings

Wireless Mobydata, Inc 650 726 7791 www.wirelessmobydata.com

GROUPS	MODEM DATA			PRINTABLE VIEW
----- <b>INFO</b> ----- <b>STATUS</b> ----- <b>COMMON</b> Misc USB <u>Serial</u> TCP UDP DNS	<b>AT</b>	<b>Name</b>	<b>Value</b>	<b>New Value</b>
	S23	Configure Serial Port	115200,8N1	4800,8N1
	\Q	Serial Port Flow Control	2	<input type="text"/>
	S50	Data Forwarding Timeout	1	1
	S51	Data Forwarding Character	0	0
	E	DB9 Serial Echo	0	0-OFF



Enter the data speed for you application. Example, if using MS Streets and Trips, enter 4800,8N1

# Local Serial GPS Settings

Wireless Mobydata, Inc 650 726 7791 www.wirelessmobydata.com

GROUPS	MODEM DATA				
-----	<b>INFO</b>	<b>AT</b>	<b>Name</b>	<b>Value</b>	<b>New Value</b>
-----	<b>STATUS</b>	*PPLATS	Local Reporting Time Interval (secs)	2	<input type="text" value="2"/>
-----	<b>COMMON</b>	*PPLATSR	Local Report Type (hex)	13	<input type="text" value="13-GPS+Date+RF"/>
Misc		*PPLATSEXTRA	Local Extra Report Ports	0	<input type="text" value="0"/>
USB		*PGPS	Persistent GPS Reports port	0	<input type="text" value="0-NONE"/>
Serial		*PGPSC	Persistent GPS Coverage	0	<input type="text" value="0-ALWAYS"/>
TCP		*PGPSD	Persistent GPS Reports Delay	0	<input type="text" value="0"/>
UDP		*PGPSR	Persistent GPS Reports Type (hex)	E1	<input type="text" value="E1-NMEA GGA+VTG+RM"/>
DNS		*PGPSF	Persistent GPS Reports Frequency	1	<input type="text" value="1"/>
Dynamic IP					
PPP/Ethernet					
PassThru					
SMTp					
Other					
Low Power					
Firewall					
Port Forwarding					
-----	<b>LOGGING</b>				
-----	<b>GPS</b>				
Server 1					
Server 2					
Server 3					
Server 4					
Misc					
<u>Serial Port</u>					



From the Ace Manager Window, select GPS-SERIAL PORT

# Local Serial GPS Settings

Wireless Mobydata, Inc 650 726 7791 www.wirelessmobydata.com

GROUPS	MODEM DATA			
----- <b>INFO</b> -----	<b>AT</b>	<b>Name</b>	<b>Value</b>	<b>New Value</b>
<b>STATUS</b> -----	*PPLATS	Local Reporting Time Interval (secs)	2	1
<b>COMMON</b>	*PPLATSR	Local Report Type (hex)	13	13-GPS+Date+RF
Misc	*PPLATSEXTRA	Local Extra Report Ports	0	0
USB	*PGPS	Persistent GPS Reports port	0	0-NONE
Serial	*PGPSC	Persistent GPS Coverage	0	0-ALWAYS
TCP	*PGPSD	Persistent GPS Reports Delay	0	0
UDP	*PGPSR	Persistent GPS Reports Type (hex)	E1	E1-NMEA GGA+VTG+RM
DNS	*PGPSF	Persistent GPS Reports Frequency	1	1
Dynamic IP				
PPP/Ethernet				
PassThru				
SMTp				
Other				
Low Power				
Firewall				
Port Forwarding				
----- <b>LOGGING</b> -----				
<b>GPS</b>				
Server 1				
Server 2				
Server 3				
Server 4				
Misc				
<u>Serial Port</u>				



\*PPLATS set for 1

# Local Serial GPS Settings

Wireless Mobydata, Inc 650 726 7791 www.wirelessmobydata.com

GROUPS	MODEM DATA			
----- <b>INFO</b> -----	<b>AT</b>	<b>Name</b>	<b>Value</b>	<b>New Value</b>
<b>STATUS</b> -----	*PPLATS	Local Reporting Time Interval (secs)	2	1
<b>COMMON</b>	*PPLATSR	Local Report Type (hex)	13	13-GPS+Date+RF
Misc	*PPLATSEXTRA	Local Extra Report Ports	0	11-GPS Data 12-GPS+Date 13-GPS+Date+RF 14-GPS+Date+RF+EIO 46-Events Report 6 E0-NMEA GGA+VTG <b>E1-NMEA GGA+VTG+RMC</b> F0-TAIP data F1-TAIP compact data
USB	*PGPS	Persistent GPS Reports port	0	
Serial	*PGPSC	Persistent GPS Coverage	0	
TCP	*PGPSD	Persistent GPS Reports Delay	0	
UDP	*PGPSR	Persistent GPS Reports Type (hex)	E1	
DNS	*PGPSF	Persistent GPS Reports Frequency	1	1
Dynamic IP				
PPP/Ethernet				
PassThru				
SMTp				
Other				
Low Power				
Firewall				
Port Forwarding				
----- <b>LOGGING</b> -----				
<b>GPS</b>				
Server 1				
Server 2				
Server 3				
Server 4				
Misc				
<u>Serial Port</u>				

\*\*PPLATSR: From the pull down menu, select E1- NMEA- GGA-VTG-RMC

# Local Serial GPS Settings

Wireless Mobydata, Inc 650 726 7791 www.wirelessmobydata.com

GROUPS	MODEM DATA			
-----				
<b>INFO</b>	<b>AT</b>	<b>Name</b>	<b>Value</b>	<b>New Value</b>
-----				
<b>STATUS</b>				
-----				
<b>COMMON</b>				
Misc	*PPLATS	Local Reporting Time Interval (secs)	2	<input type="text" value="1"/>
USB	*PPLATSR	Local Report Type (hex)	13	<input type="text" value="E1"/>
Serial	*PPLATSEXTRA	Local Extra Report Ports	0	<input type="text" value="0"/>
TCP	*PGPS	Persistent GPS Reports port	0	<input type="text" value="0-NONE"/> <input type="text" value="1-DB9 Serial"/> <input type="text" value="2-USB Serial"/> <input type="text" value="3-DB9 and USB"/>
UDP	*PGPSC	Persistent GPS Coverage	0	<input type="text" value="0"/>
DNS	*PGPSD	Persistent GPS Reports Delay	0	<input type="text" value="0"/>
Dynamic IP	*PGPSR	Persistent GPS Reports Type (hex)	E1	<input type="text" value="E1-NMEA GGA+VTG+RM"/>
PPP/Ethernet	*PGPSF	Persistent GPS Reports Frequency	1	<input type="text" value="1"/>
PassThru				
SMTP				
Other				
Low Power				
Firewall				
Port Forwarding				
-----				
<b>LOGGING</b>				
-----				
<b>GPS</b>				
Server 1				
Server 2				
Server 3				
Server 4				
Misc				
<u>Serial Port</u>				



\*\*PGPS: From the pull down menu, select 1-DB9 Serial  
(Assumption your Serial cable connection is a DB-9)

# Local Serial GPS Settings

Wireless Mobydata, Inc 650 726 7791 www.wirelessmobydata.com

GROUPS	MODEM DATA			
-----				
<b>INFO</b>	<b>AT</b>	<b>Name</b>	<b>Value</b>	<b>New Value</b>
-----				
<b>STATUS</b>				
-----				
<b>COMMON</b>				
Misc	*PPLATS	Local Reporting Time Interval (secs)	2	<input type="text" value="1"/>
USB	*PPLATSR	Local Report Type (hex)	13	<input type="text" value="E1"/>
Serial	*PPLATSEXTRA	Local Extra Report Ports	0	<input type="text" value="0"/>
TCP	*PGPS	Persistent GPS Reports port	0	<input type="text" value="1"/>
UDP	*PGPSC	Persistent GPS Coverage	0	<input type="text" value="0-ALWAYS"/>
DNS	*PGPSD	Persistent GPS Reports Delay	0	<input type="text" value="0"/>
Dynamic IP	*PGPSR	Persistent GPS Reports Type (hex)	E1	<input type="text" value="E1-NMEA GGA+VTG+RM"/>
PPP/Ethernet	*PGPSF	Persistent GPS Reports Frequency	1	<input type="text" value="1"/>
PassThru				
SMTP				
Other				
Low Power				
Firewall				
Port Forwarding				
-----				
<b>LOGGING</b>				
-----				
<b>GPS</b>				
Server 1				
Server 2				
Server 3				
Server 4				
Misc				
<u>Serial Port</u>				



\*\*PGPS: From the pull down menu, select 1-DB9 Serial  
(Assumption your Serial cable connection is a DB-9)

# Local Serial GPS Settings

Wireless Mobydata, Inc 650 726 7791 www.wirelessmobydata.com

GROUPS	MODEM DATA			
-----				
<b>INFO</b>	<b>AT</b>	<b>Name</b>	<b>Value</b>	<b>New Value</b>
-----				
<b>STATUS</b>				
-----				
<b>COMMON</b>				
Misc	*PPLATS	Local Reporting Time Interval (secs)	2	<input type="text" value="1"/>
USB	*PPLATSR	Local Report Type (hex)	13	<input type="text" value="E1"/>
Serial	*PPLATSEXTRA	Local Extra Report Ports	0	<input type="text" value="0"/>
TCP	*PGPS	Persistent GPS Reports port	0	<input type="text" value="1"/>
UDP	*PGPSC	Persistent GPS Coverage	0	<input type="text" value="0-ALWAYS"/>
DNS	*PGPSD	Persistent GPS Reports Delay	0	<input type="text" value="0"/>
Dynamic IP	*PGPSR	Persistent GPS Reports Type (hex)	E1	<input type="text" value="E1-NMEA GGA+VTG+RMC"/>
PPP/Ethernet	*PGPSF	Persistent GPS Reports Frequency	1	<input type="text" value="F0-TAIP data"/>
PassThru				<input type="text" value="F1-TAIP compact data"/>
SMTp				<input type="text" value="F2-TAIP LN report"/>
Other				<input type="text" value="F3-TAIP TM report"/>
Low Power				
Firewall				
Port Forwarding				
-----				
<b>LOGGING</b>				
-----				
<b>GPS</b>				
Server 1				
Server 2				
Server 3				
Server 4				
Misc				
<u>Serial Port</u>				



\*\*PGPSR: From the pull down menu, select E-1  
(Assumption your local computer software is NMEA protocol)

# Local Serial GPS Settings

Wireless Mobydata, Inc 650 726 7791 www.wirelessmobydata.com

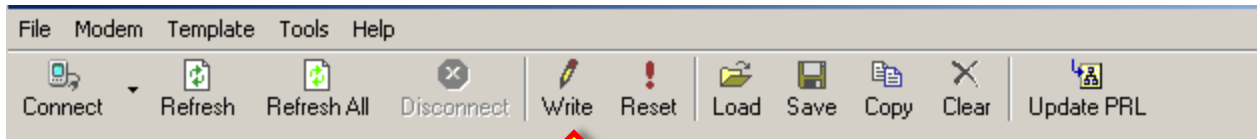
GROUPS	MODEM DATA			
----- <b>INFO</b> -----	<b>AT</b>	<b>Name</b>	<b>Value</b>	<b>New Value</b>
<b>STATUS</b> -----	*PPLATS	Local Reporting Time Interval (secs)	2	<input type="text" value="1"/>
<b>COMMON</b>	*PPLATSR	Local Report Type (hex)	13	<input type="text" value="E1"/>
Misc	*PPLATSEXTRA	Local Extra Report Ports	0	<input type="text" value="0"/>
USB	*PGPS	Persistent GPS Reports port	0	<input type="text" value="1"/>
Serial	*PGPSC	Persistent GPS Coverage	0	<input type="text" value="0-ALWAYS"/>
TCP	*PGPSD	Persistent GPS Reports Delay	0	<input type="text" value="0"/>
UDP	*PGPSR	Persistent GPS Reports Type (hex)	E1	<input type="text" value="E1"/>
DNS	*PGPSF	Persistent GPS Reports Frequency	1	<input type="text" value="1"/>
Dynamic IP				
PPP/Ethernet				
PassThru				
SMTP				
Other				
Low Power				
Firewall				
Port Forwarding				
----- <b>LOGGING</b> -----				
<b>GPS</b>				
Server 1				
Server 2				
Server 3				
Server 4				
Misc				
<u>Serial Port</u>				

Set other fields as shown

This completes the set up for the first modem

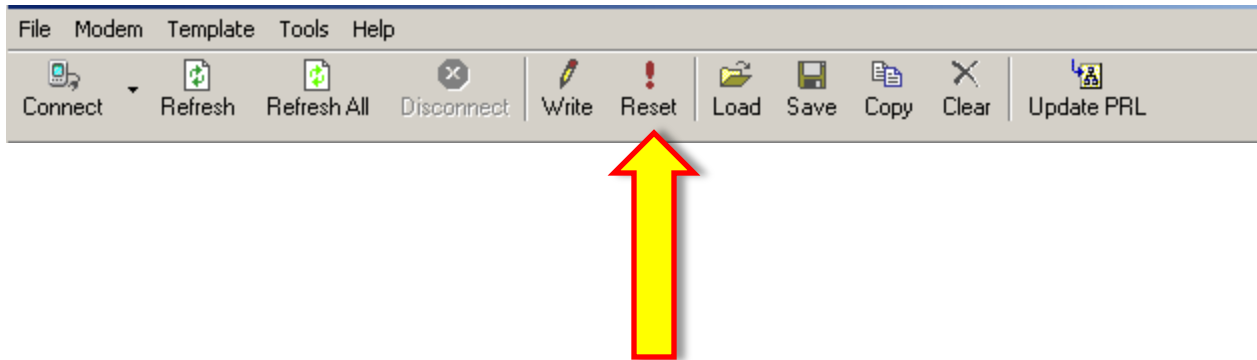
# Write the configuration to the modem

Wireless Mobydata, Inc 650 726 7791 www.wirelessmobydata.com



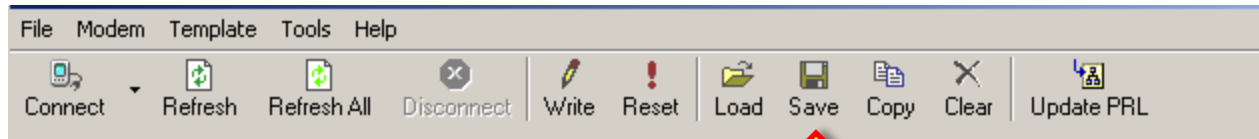
# Reset the modem

Wireless Mobydata, Inc 650 726 7791 [www.wirelessmobydata.com](http://www.wirelessmobydata.com)



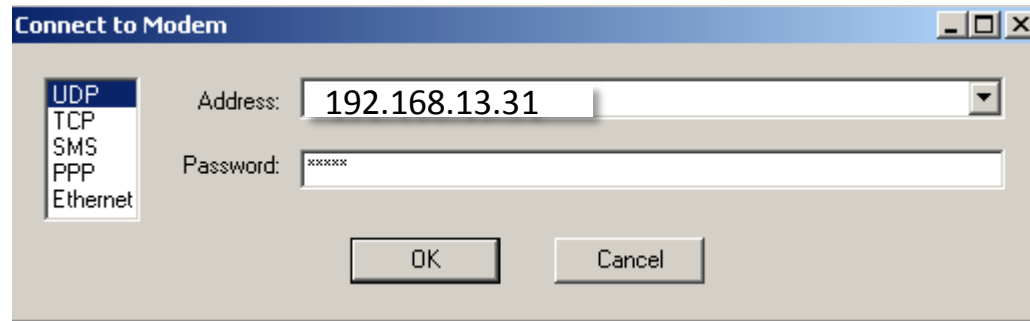
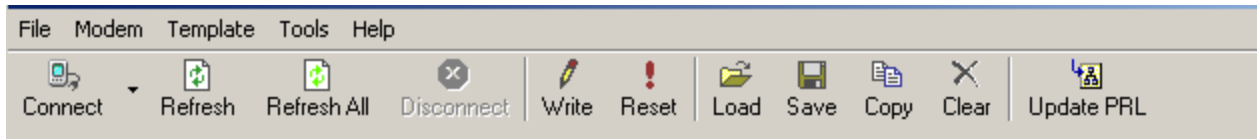
# Save the configuration to your local computer

Wireless Mobiledata, Inc 650 726 7791 [www.wirelessmobiledata.com](http://www.wirelessmobiledata.com)

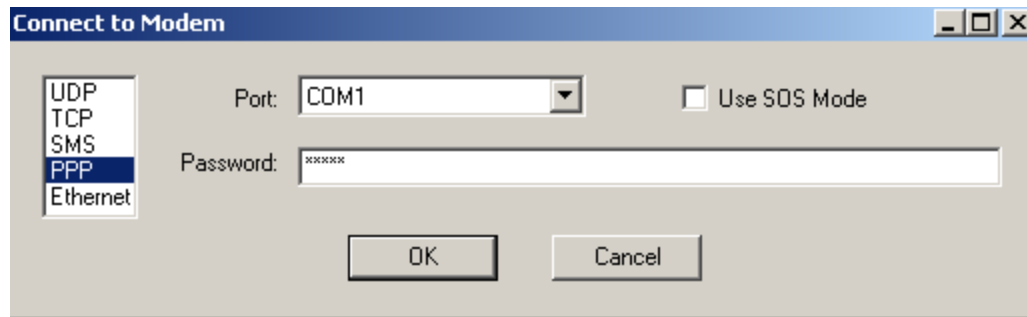


# Push the configuration file to other modems

Wireless Mobydata, Inc 650 726 7791 www.wirelessmobydata.com



Ethernet

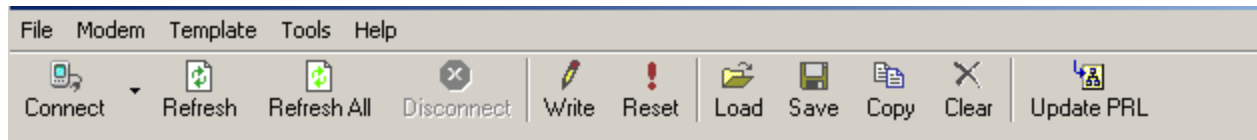


Serial

Connect to the new modem using Ethernet or Serial interface.  
Ethernet default is 192.168.13.31

# Push the configuration file to other modems

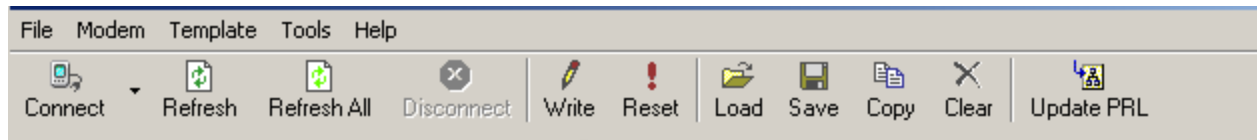
Wireless Mobiledata, Inc 650 726 7791 www.wirelessmobiledata.com



Load the configuration file from your local computer

# Push the configuration file to other modems

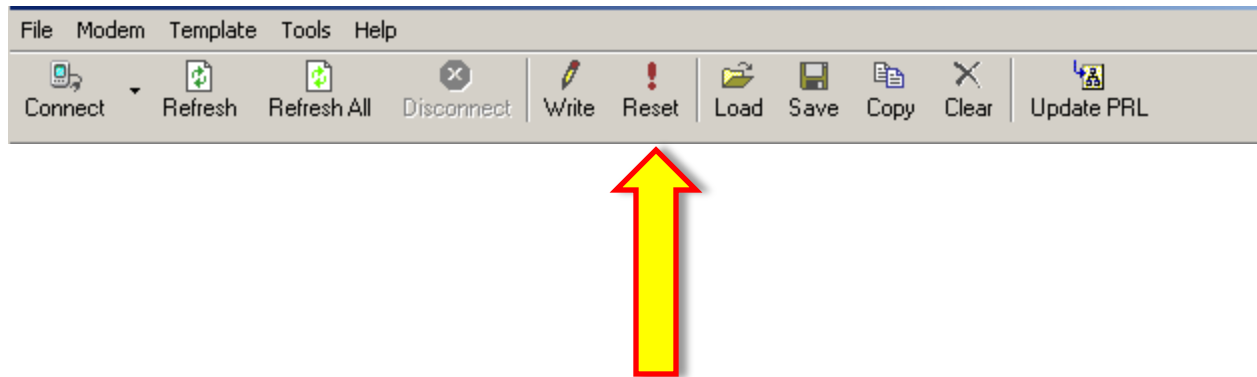
Wireless Mobydata, Inc 650 726 7791 www.wirelessmobydata.com



Write the configuration file to the new modem

# Push the configuration file to other modems

Wireless Mobydata, Inc 650 726 7791 www.wirelessmobydata.com



Reset the modem. Test that you have Ethernet connection to the Internet and local GPS using either Streets and Trips **\*\*OR\*\*** Hyperterminal