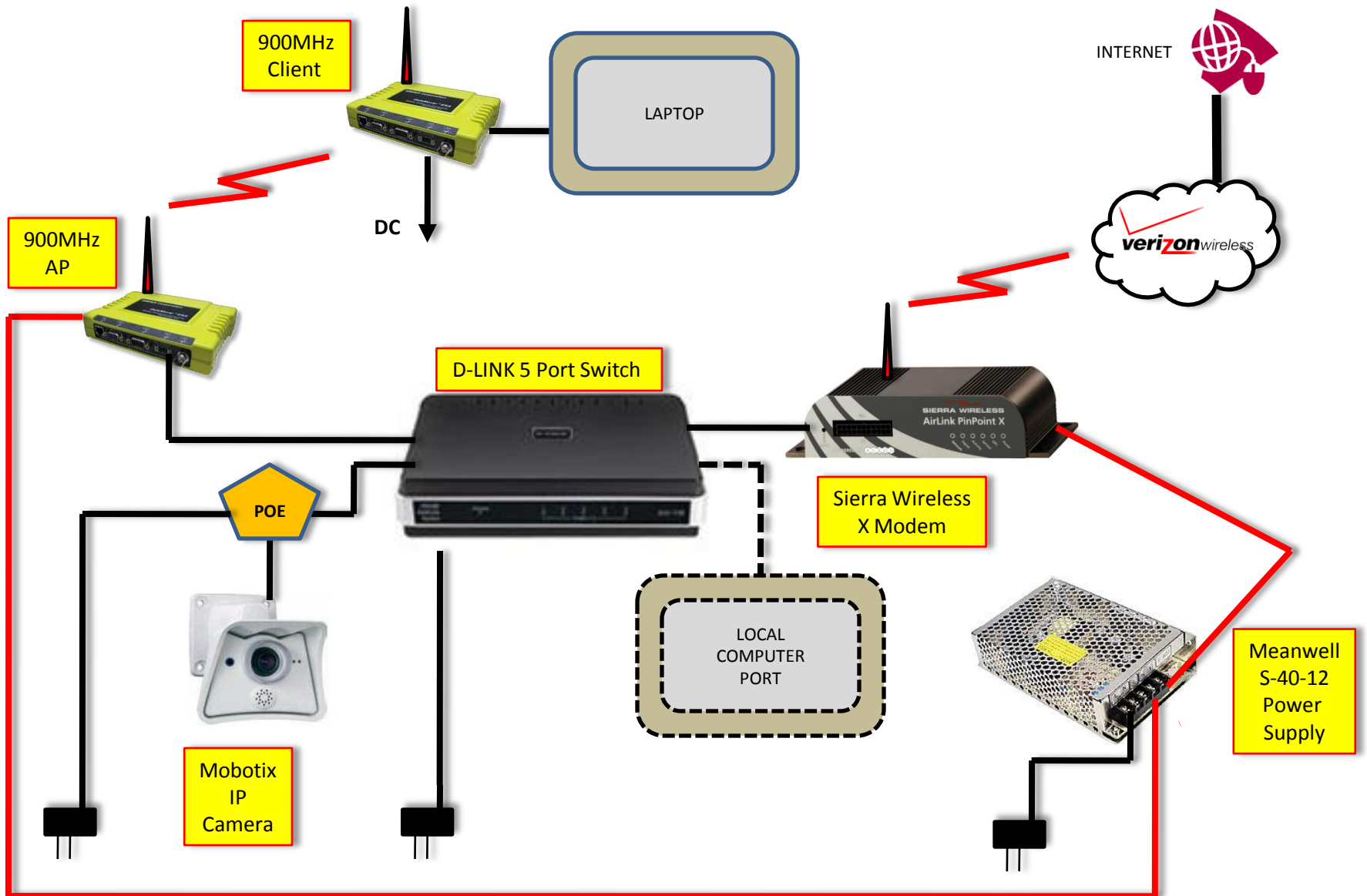
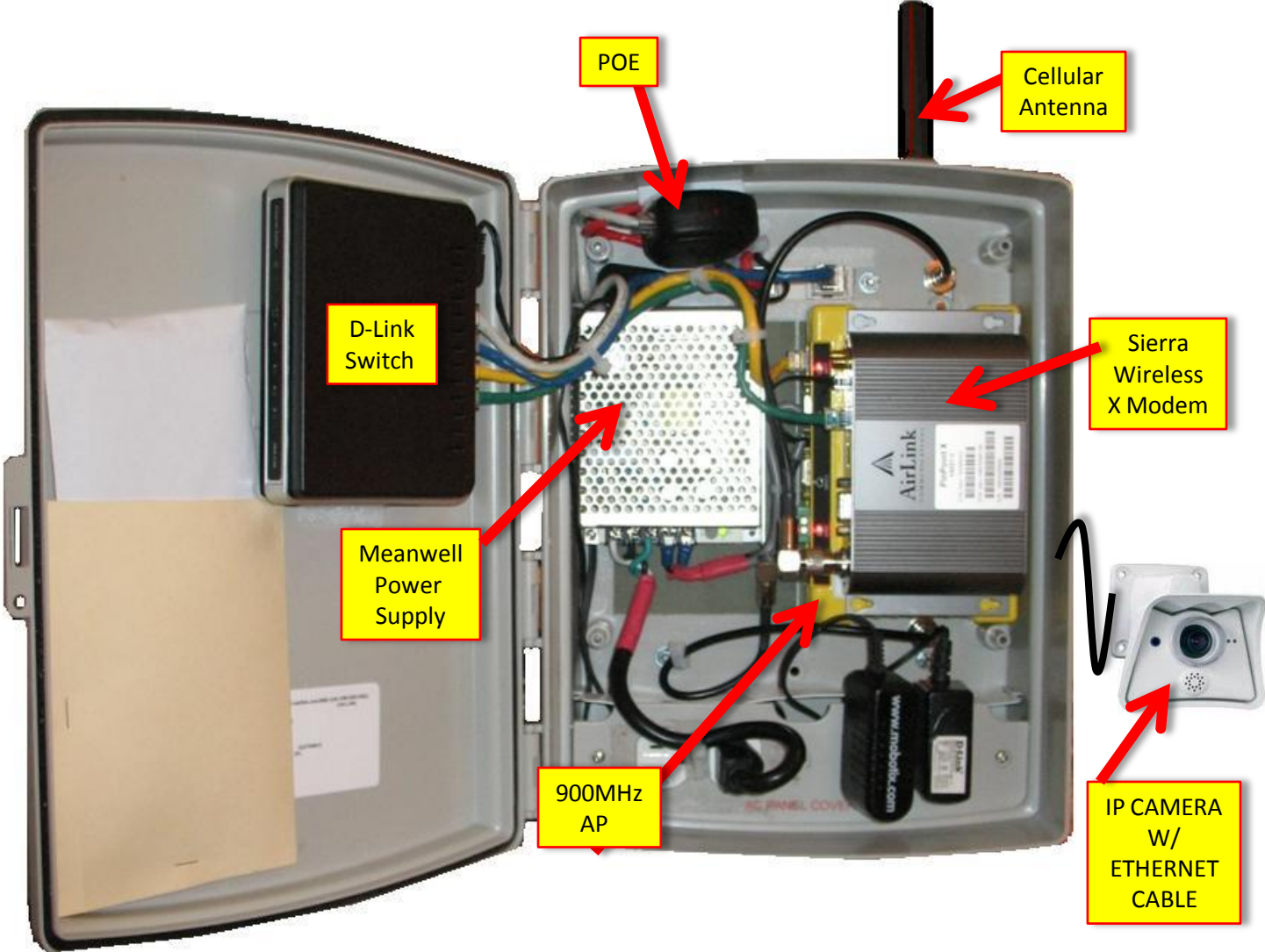


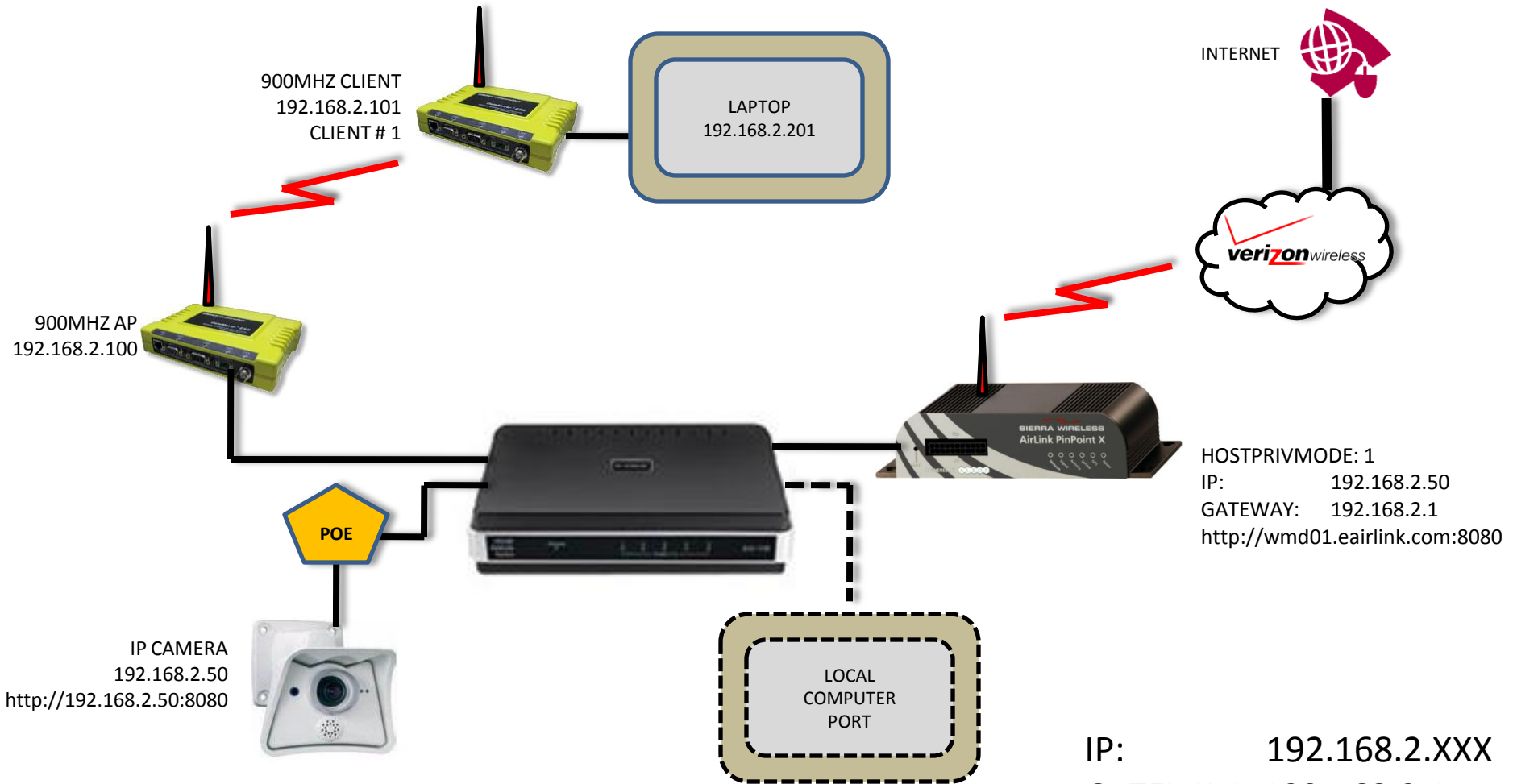
Configuration supporting  
Camera connected to Cellular  
Modem and 900MHz Access Point.  
Sending data to a 900MHz mobile  
and also a Blackberry (via Cellular)



# Prototype Layout: Allowing Cellular + 900Mhz Access Point and Video Camera



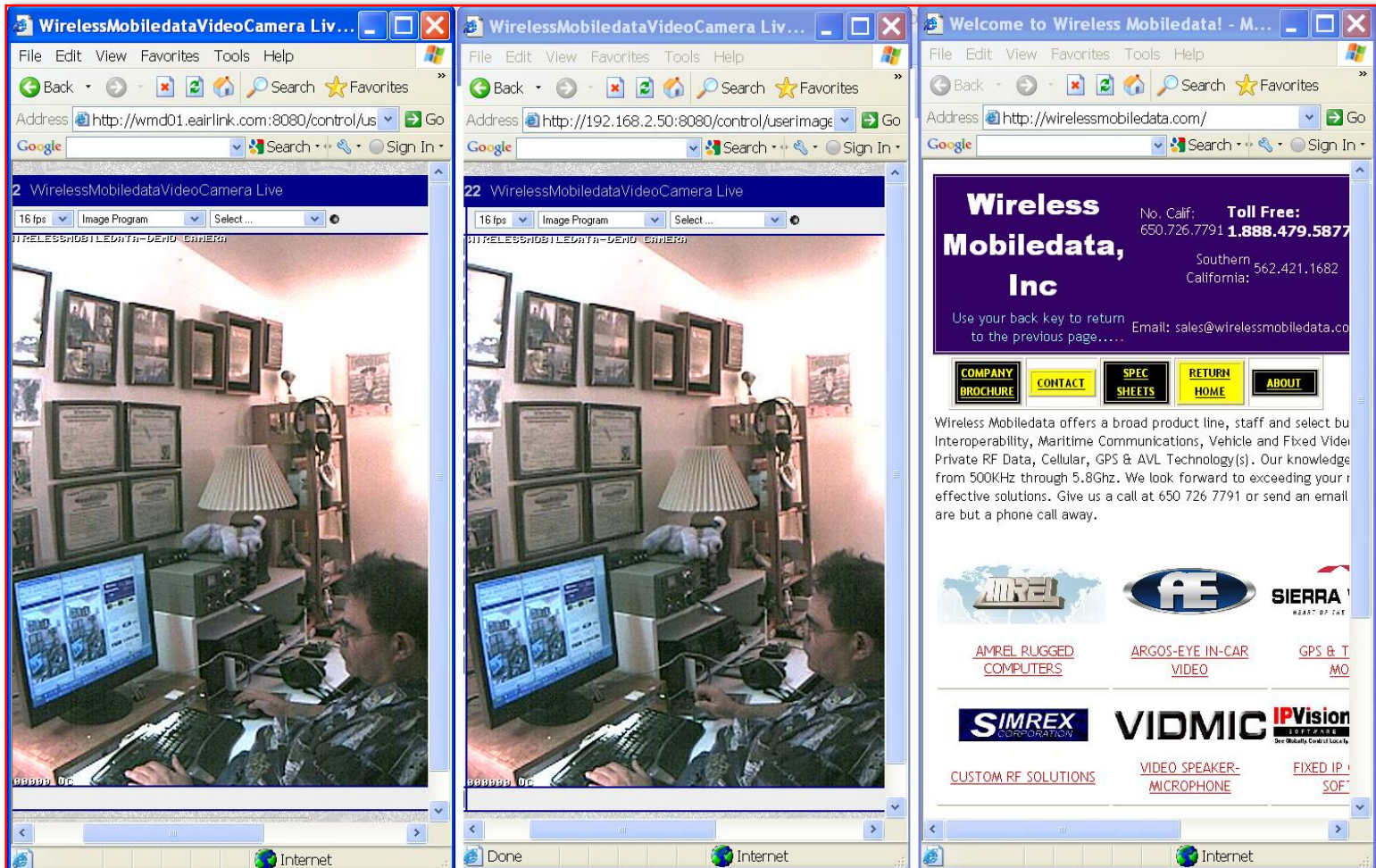
# IP ROUTING WHEN PLACING CAMERA AT THE ACCESS POINT



Set preferred DNS to:  
66.174.92.14  
69.78.96.14  
(VZW)

IP: 192.168.2.XXX  
GATEWAY: 192.168.2.1  
NM: 255.255.255.0

Design supports simultaneous local (900MHz) video plus Cellular Access plus Internet Service



<http://wmd01.eairlink.com:8080>  
VIA CELLULAR

<http://192.168.2.50:8080>  
VIA 900MHZ A/P & CLIENT

<http://www.wirelessmabledata.com>  
INTERNET VIA CELLULAR

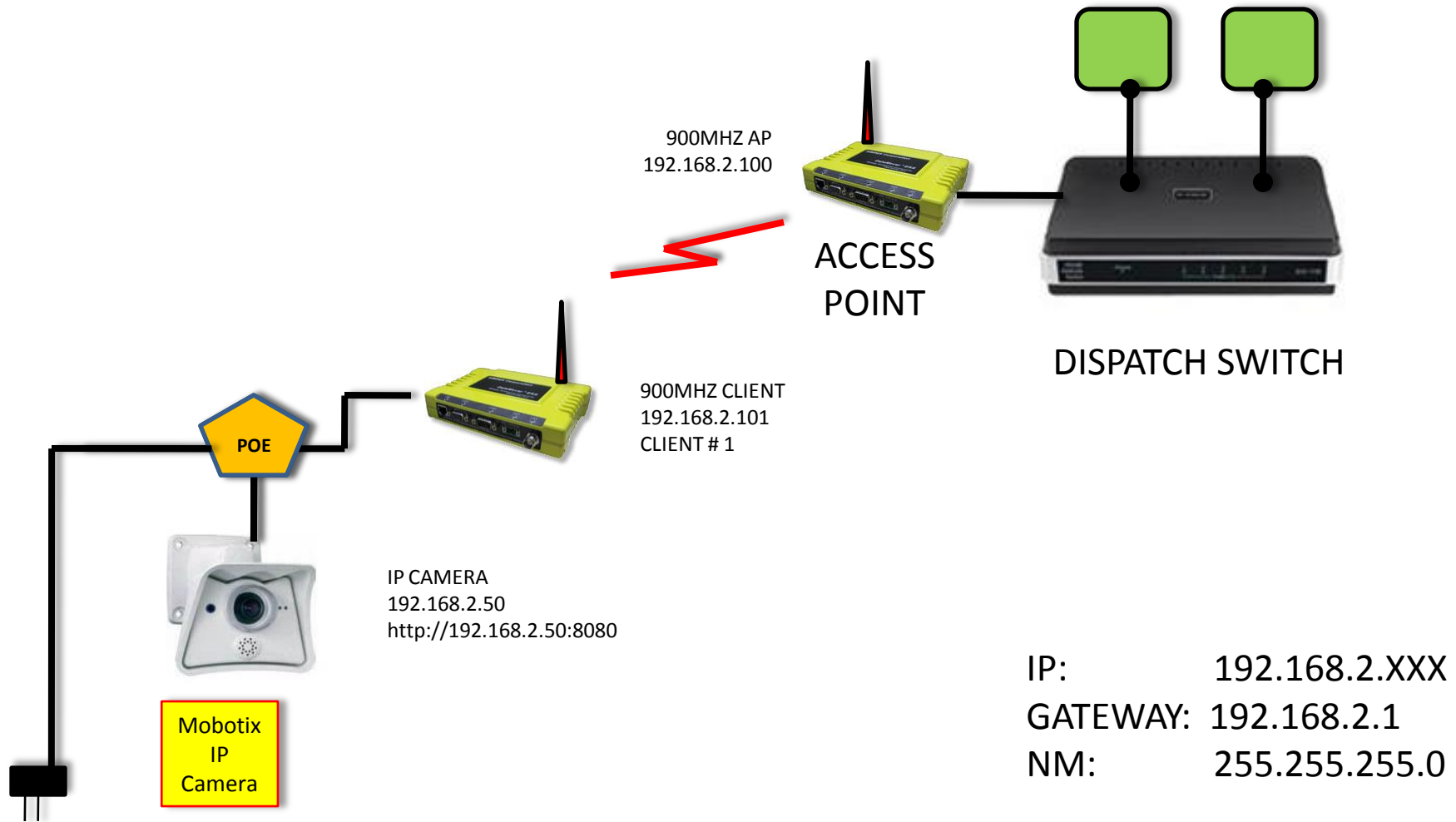
Design supports push to BlackBerry



Configuration supporting  
camera connected to Client 900MHz  
Radio and sending to a 900Mhz  
Access Point.

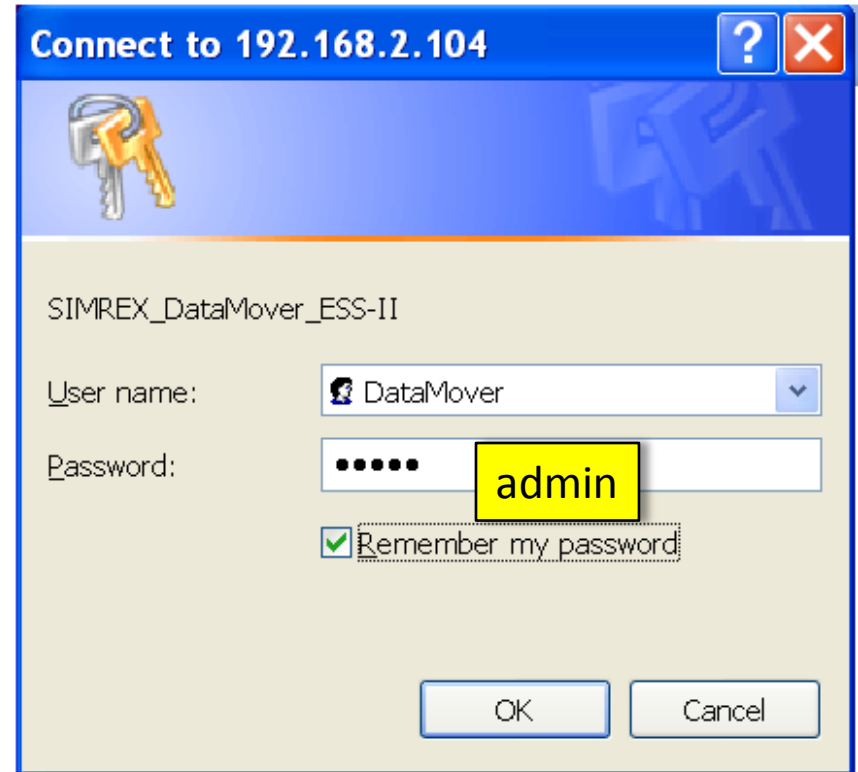
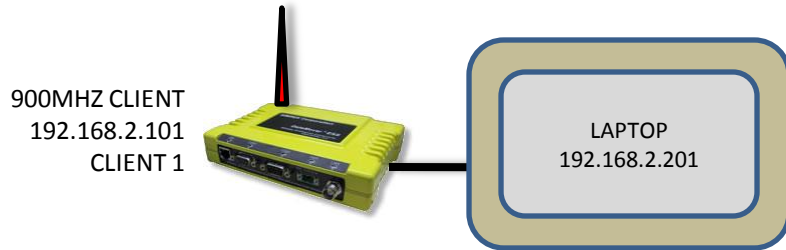
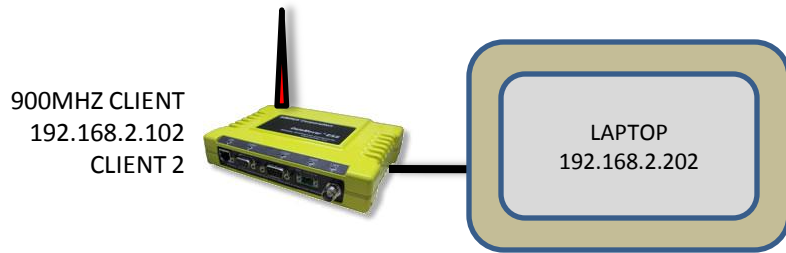
Distributing the recovered video to  
multiple dispatch stations with a  
switch

# IP ROUTING WHEN PLACING CAMERA AT THE CLIENT AND SENDING DATA TO MULTIPLE DISPATCH COMPUTERS



# A/P and Client IP Settings and Passwords

# CLIENT & AP IP ROUTING



Network Name: wmd\_900